

The Canterbury Museum Trust Board gratefully acknowledges the following funding bodies: Christchurch City Council, Hurunui District Council, Selwyn District Council and Waimakariri District Council who contribute a significant proportion of the funding to maintain, operate and develop Canterbury Museum under the provisions of the Canterbury Museum Trust Board Act 1993.

The Museum received funding from the National Institute of Water and Atmospheric Research (NIWA) for the fourth year of a five-year project to research the population demography and spatial biology of the albatross species that breed on the Chatham Islands.

The New Zealand Lottery Grants Board funded a project to upgrade the Museum's pinned insect collection into modern storage and catalogue them on to our collections management database.

We are grateful for the continuing support that the Mason Foundation, the Marsden Fund and the RS Allan Memorial Fund provide to both staff and Research Fellow initiatives. The Mason Foundation also continues to fund the publication of the *Records of the Canterbury Museum*.

The Canterbury Museum Friends continued their support with purchases this year including three rare early New Zealand parchment documents belonging to Frederick Strouts, along with his shipboard diary and folding compass. Also purchased was the mailbox from the *Terra Nova* which was used by the British Antarctic Expedition 1917-1919.





Collections Technician  
Nicolas Boigelot working on  
the invertebrate Collection

# Contents

<b>04</b>	Report from Director and Chairperson	<b>19</b>	Statement Of Comprehensive Income Statement of Changes in Equity
<b>07</b>	Our Visitors	<b>20</b>	Statement of Financial Position
<b>08</b>	Our Programmes	<b>21</b>	Statement of Cash Flow
<b>11</b>	Our Collections	<b>22</b>	Notes to the Financial Statements
<b>12</b>	Our Research	<b>39</b>	Statement of Service Performance
<b>15</b>	Our People and Work Environment	<b>40</b>	Audit Report
<b>16</b>	Publications	<b>42</b>	Exhibitions
		<b>43</b>	Museum Representation on External Organisations
		<b>44</b>	Museum Staff
		<b>45</b>	Museum Volunteers
		<b>46</b>	Organisational Chart
		<b>47</b>	Benefactors
		<b>48</b>	Canterbury Museum Trust Board Ōhākī O Ngā Tipuna Canterbury Museum Friends Committee Form of Bequest

# Report from Director and Chairperson

Anthony Wright



Michael McEvedy



The Museum has continued this year to make improvements in most areas, in spite of the ongoing challenges of inadequate visitor services and circulation, ageing facilities and building services. The Board is determined to solve this predicament in a way which provides for continuing growth in community service, visitor numbers and capacity to deliver new and innovative programmes, while respectfully honouring this wonderful building's heritage.

## Our visitors

Canterbury Museum experienced another year of high visitation, hosting 638,216 visitors. We continue to engage independent market researchers to survey our visitors on their experience when visiting the Museum, and this year 95 per cent of those visitors rated their experience as good, very good or excellent. This helped us achieve visitor donations of \$158,491.

The Robert McDougall Gallery at Canterbury Museum was again opened to the public with two exciting exhibitions, *Snare/Mahanga*, which was part of the Christchurch Arts Festival, and *Te Hokinga Mai: Mo Tatou a Mo Ka Uri*, a combination of the homecoming of the Ngāi Tahu whanui exhibition from Te Papa and a major showing of Canterbury Museum's Ngāi Tahu taonga. This was a particular highlight with visitors being hosted by a combination of Museum staff and members of local runanga.

*Night at the Museum* has become a regular event in the Museum calendar and this year was held during the Kidsfest fortnight. The two nights attracted an unprecedented 5,427 visitors in the space of four hours, with staff entering into the spirit and providing additional props to delight and amaze the very enthusiastic audience.

The Museum was re-accredited as a Qualmark Endorsed Visitor Activity, the official quality mark for tourism businesses in New Zealand, with a near perfect assessment score. We also achieved the Qualmark Enviro-Silver Award in recognition of sustainability initiatives implemented over the year.

## Our programmes

It was another busy year in terms of special exhibitions, with 19 being delivered. As well as the two noted above, these included hosting an exhibition for the Canterbury Embroiderers' Guild, through to the thought-provoking *Assume Nothing* staged in conjunction with the Human Rights Commission. In line with our commitment to continually improve the visitor experience, two new computer based experiences were added to the galleries: in the Nga Taonga gallery the *3D Digital Binocular Station*, which brings artefacts in the gallery to life with the aid of augmented reality technology, and in the Geology Gallery the GEOSK Earthquake interactive.

Over 37,000 individuals used the Museum as an education resource, and we were successful in negotiating a three year Learning Experiences Outside The Classroom (LEOTC) contract with the Ministry of Education.

Our public programmes, which included the ever popular *Great Museum Santa Search*, and curator/artist led programmes which complemented our exhibitions, attracted over 30,000 individuals.

A programme of touring exhibitions to the districts which help fund the Museum was continued this year with A C Barker's photographic display *Out of the Darkroom* being viewed by over 66,000 visitors during its time on display at the Leeston, Rangiora and Amberley Libraries.

### Our collections

This year 3,347 objects were acquired for the permanent collection with highlights including an eleven page handwritten document by Robert Falcon Scott, detailing his plans for his journey to the Pole; a moa bone harpoon head from Banks Peninsula; Francis Ryman's archaeological taonga; a significant collection of large pounamu boulders from the West Coast; crockery and cutlery from the *Terra Nova*; and medals, documents and photographs relating to eminent geologist Dr Brian Mason.

Two major collection reviews were undertaken this year. The first Collections Inventory review in ten years confirmed that the Museum currently has around 2.1 million items either on display or in storage. The second study looked at storage conditions, and highlighted an area of real concern. The current substandard state of some of the Museum buildings and environmental conditions hugely influence the long term care that can be provided to the collections.

Ongoing work on the invertebrate collection has led to significant improvements in documentation and storage of the New Zealand insect specimens, with a total of 109,812 catalogued to date. The vertebrate collections project has also been successful in cataloguing and verifying 40,942 skins, mounts and bird specimens along with over 24,000 moa specimens. All this work was able to be achieved as a result of special project funding.

We continue our close partnership with the Antarctic Heritage Trust, especially in relation to the care of the collection of objects which have been removed from the Ice and managing the data produced by the Trust's conservators in Antarctica.

### Our research

Staff research resulted in the publication of 30 peer-reviewed papers in academic journals and a range of popular publications. In addition, curators were contracted to provide advice to the Ministry of Fisheries and the Department of Conservation, and also acted as expert examiners for the Ministry for Culture and Heritage.

External funding supported two research projects. The first is a five year National Institute of Water and Atmospheric Research (NIWA) funded project to research the effects of fishing on the albatross species that breed on the Chatham Islands, and the second is the study of the koiwi tangata from Wairau Bar, with funding from the Mason Foundation.

The investigations undertaken by the Canterbury Museum Archaeological Society at Wakanui during the 1970s are currently being analysed and written up by a Museum based Research Associate in Archaeology and this will result in publications, conference papers, journal articles and public presentations. Research Fellows continue to provide excellent outputs and have had four peer-reviewed papers published in the *Records of the Canterbury Museum*.

### Our people and working environment

Our 54 volunteers contributed over 10,500 hours of their time to assist the Museum in achieving its goals with collections and also in providing assistance for the school holiday programmes. The work of Sally Burrage and Baden Norris, both long-standing Emeritus Curators was acknowledged this year with Sally receiving the Volunteer Recognition Award, and Baden the Christchurch City Council Civic Award.

Training continues to play a significant part in the Museum and this year over 3,000 training hours were completed, with staff undertaking a wide range of relevant courses, including the Aviation, Tourism, Travel and Training Organisation (ATTTO) Museum Practice Qualification, which another seven staff have now completed.

### Our thanks

The success of the Museum could not be achieved without the support and dedication of its staff and volunteers, and we offer sincere and grateful thanks for their loyalty and hard work which has enabled us to exceed most of our objectives, and much more besides. This continuing success has occurred despite no new staff positions for several years.

To the Board, our visitors, our funders, sponsors and benefactors, a big thank you for your support and generosity in contributing to such a successful year.



ANTHONY WRIGHT  
Director



MICHAEL MCEVEDY  
Chairperson



Matilda Cox enjoying  
the Discovery Centre's new  
microscope interactive

# Our Visitors

**Staff hosted over 630,000 visitors to the Museum including over 130,000 who were welcomed to the Paua Shell House in the tradition of Fred and Myrtle Flutey.**

Visitors were also welcomed to two exhibitions in the Robert McDougall Gallery at Canterbury Museum, namely *Snare/Mahanga*, as part of the Christchurch Arts Festival, which attracted over 7,500 visitors, and *Te Hokinga Mai: Mo Tatou a Mo Ka Uri*, which attracted over 26,500 visitors. This latter exhibition was a particular highlight for our staff, hosting visitors in partnership with members of the local runanga and providing merchandise for sale of products and art works from Ngāi Tahu artists. A specific marketing plan was developed for this exhibition, which included planning the dawn ceremony for the opening.

This year the results from our independent market research survey once again confirmed the quality of customer service delivery at the Museum with over 95 per cent of surveyed visitors rating their experience very positively. Monitoring and responding to visitor feedback on a weekly basis underpins service delivery, with over 400 visitor comments recorded and replied to. Customer Service staff also undertook visitor evaluations of three temporary exhibitions. These evaluations provide valuable feedback that enables staff to ensure there is continuous improvement in all our service delivery areas.

We were also delighted that the Museum was re-accredited as a Qualmark Endorsed Visitor Activity, the official quality mark for tourism businesses in New Zealand, with a near perfect assessment score.

In addition to welcoming visitors, our Curatorial and Collections staff continued to provide excellent service to our visitors by making collections and collections expertise available. This year 203 objects were identified and 177 objects processed under the provisions of the Protected Objects Legislation, along with thousands of general enquiries responded to.

The Documentary Research Centre and image service continue to provide a service for over 2,000 of our visitors, and 896 images were reproduced for specific orders from customers. The Centre is widely utilised by private family history researchers, public organisations, and commercial businesses, as well as by academics using our collection as a primary resource in their research.

Our Discovery Centre saw some exciting improvements over the year, with the installation of a microscope interactive as well as a new bank of computers. Over 48,000 individuals have visited Discovery this year, and for the 414 Discovery Club members, a new full-colour Discovery Club newsletter has been developed to keep members in touch with news and events in Discovery.

A major project undertaken this year was to plan and implement a complete redesign of the Canterbury Museum website. Research was carried out into current developments and best practice in website design, along with a comprehensive review of other museum websites from around the world. Working in conjunction with a Christchurch based web-design company, the Communications Manager developed the content and design of the new site. Staff from across the Museum were also involved in providing specialist content and feedback during the various stages of planning and development. The result is a website that embodies the Museum's brand identity, addresses its current needs and provides a sound platform for future developments. The new website went live on 1 June 2010. In the 2009/10 year the Museum website received 33,289 visits from 109 countries, and with the new site attracting good visitation it is expected there will be a steady increase in website visitation over the coming financial year.

The preparation and delivery of a marketing and communications plan for *Te Hokinga Mai* was also a significant project for Communications during the 2009/10 year. This included planning the dawn ceremony for the opening of the exhibition, an event which started at 5.30 am on Saturday 20 February and involved a blessing of the exhibition in the Robert McDougall Gallery, followed by a powhiri and breakfast for over 200 people in a marquee on the Archery Lawn of the Christchurch Botanic Gardens.

A number of significant visitors to the Museum were hosted during this period including Miss Theresa-Mary Morton, Head of Exhibitions for The Royal Collection as part of planning for *The Heart of the Great Alone* exhibition, the new United States Ambassador, His Excellency David Huebner, Dr Garth Carnaby, President of the Royal Society of New Zealand, delegates from the Symposium on East Asia Security and the Council of Managers of National Antarctic Programmes, and the new British High Commissioner, Her Excellency Vicki Treadell.

# Our Programmes

The Museum presented 19 special exhibitions in the 2009-2010 financial year, the highlight being *Te Hokinga Mai: Mo Tatou a Mo Ka Uri*, in the Robert McDougall Gallery at Canterbury Museum.

This exhibition was presented in partnership with Te Runanga o Ngāi Tahu to celebrate the return home of the *Mo Tatou* exhibition from Te Papa Tongarewa, the Museum of New Zealand.

For each exhibition held at the Museum, the Curatorial and Collection Services Groups contribute in a wide variety of ways towards a successful outcome, finding and assessing the condition of objects in storage, researching and preparing text for labels, undertaking cleaning and conservation of objects before they are placed on display, and returning them to storage at the completion of each exhibition.

In addition to the above temporary exhibitions, two new computer based visitor experiences were added: the *3D Digital Binocular Station* in the Nga Taonga Gallery, which was the culmination of five years development and partnership with the Human Interface Technology Laboratory New Zealand (HITLabNZ) at the University of Canterbury, and the *GEOSK* Earthquake interactive, installed in the Geology Gallery, which was developed in partnership with Institute of Geological and Nuclear Sciences (GNS). Both interactives have been incredibly well received by visitors of all ages.

The support of community groups has been a long tradition of the Museum's and this year was no exception with the hosting of exhibitions for Canterbury Potters' Association, Canterbury Embroiderers' Guild, and *Canterbury Fired Up* potters, as well as supporting the Festival of Flowers by hosting the popular *Vertical Meadow*, outside the front of the Museum.

We also worked closely with other organisations to tell Canterbury stories such as: *Chamber of Commerce*: a celebration of 150 years of working with Canterbury businesses; *Wairua*, which celebrated Tikanga Māori in New Zealand children's books; *St John: 125 Years*, showcasing the history of St John in New Zealand; *Images of the New Millennium*, a review of the past decade through images as reported by *The Press*, and *Hurunui Quilts*, which brought together eight quilts made especially for each of the Hurunui District libraries.

Other exhibitions included: *Assume Nothing* - profiling members of the Transgender community in New Zealand; *Snare/Mahanga* - celebrating New Zealand birds as the muse in New Zealand art; *The Giant Weta* - highlighting the work of the Air New Zealand Environment Trust; *Ey! Iran* - a celebration of contemporary Iranian photography; *Maumahara/Remember*, showcasing the weaving of Rokahurihia Ngarimu-Cameron; *Pleasure and Play in Edo Japan*, staged in partnership with Richard Bullen from the University of Canterbury, displayed a selection of woodblock prints from the Museum's collection; *Anthony Wilding*, in partnership with

Canterbury Tennis, told the story of the famous Cantabrian who won at Wimbledon; artist Luke Anthony's *Carved Birds of the Chatham Islands* featured in the Visitor Lounge; and *Once upon a Time* uncovered early 19th century children's book treasures from the Museum's Manuscript Collection.

In addition to our exhibition programme, this year 70 public programmes, functions and events, ranging from catered exhibition openings, to corporate functions, seminars and talks were held in the Museum. The completion of the audio visual upgrade of the Bird Hall, a key venue for public programmes, greatly enhanced the quality of programme delivery.

Public programmes attracted over 30,000 visitors, with the largest daily numbers of the year coming through for *Night at the Museum*. Themed around the "Night at the Museum" movie, these two nights of magic and mayhem attracted 5,427 visitors. The ever popular *Great Museum Santa Search* attracted over 3,600 visitors, with the galleries ringing with the excited calls from children as they found yet another Santa hidden in a display. In recognition of the 100th anniversary of Anthony Wilding's magnificent win at Wimbledon, a *Teeming Tennis Ball* competition was held, which drew an overwhelming 9,284 entries. For all these occasions, Curatorial and Collections staff facilitated access to collection items, and assisted with preparations.

In order to ensure our public programmes are meeting the needs of our visitors, we undertook an evaluation of our autumn programmes - 202 people responded to this request with the result being that 99.3% of respondents enjoyed the programmes on offer and 99.5% of them would recommend the programme to others. This result could only be achieved through the high standard of speakers/facilitators that we continue to attract.

Throughout the year targeted marketing and communications activity was used to promote the Museum's special exhibitions and public programmes. The key target audiences for Canterbury Museum are Christchurch and Canterbury residents and tourists (both domestic and international), with specific media used to target each group. The marketing strategy includes internally produced collateral such as *Update*, the quarterly programme brochure, special exhibition posters, the *Explorer* guide, and the *Real Experiences* brochure. Media buying and creative design are all carried out in-house, which enables the Museum to develop and maintain a very strong and consistent brand identity across all media including newspapers, magazines, radio and the web.



Exhibitions Preparator  
Chris O'Rourke installing  
exhibition signage

Education plays an important role within the Museum and in this financial year 37,366 individuals used Canterbury Museum as an education resource. Our programmes and educators continue to receive excellent feedback from teachers and the high standard of programmes contributed towards the Museum being successful in negotiating a three year Learning Experiences Outside The Classroom (LEOTC) contract with the Ministry of Education, which will come into operation in the next financial year.

Lending our collections to a wide variety of institutions is an important outreach aspect, and this year outward loans were made for exhibitions and research purposes, as well as for ceremonial occasions, to museums and other similar organisations. A total of 34 separate outgoing loans were processed, comprising 388 objects. Inwards loans are usually organised to facilitate our exhibitions programme, and this year 18 inwards loans involving 235 objects were processed.

Outreach, support and expertise was provided to: Akaroa Museum, Antarctic Heritage Trust, Association of University Women, Christchurch Art Gallery, Christchurch City Council, Christchurch City Libraries, DOC Arthur's Pass Information

Centre, Department of Conservation, Geraldine Museum, Gore Historical Museum, Kaikoura Museum, Lincoln and Districts Historical Society, the Logie Collection, National Services Te Paerangi, Nelson Provincial Museum, Okains Bay Historical Museum, Our City Ōtautahi, Oxford Historic Museum, Rangiora Museum, Sofa Gallery, South Canterbury Museum, St Margaret's College Archives, Sumner Museum, Te Papa Tongarewa, *The Press*, the University of Canterbury, the Waiouru Army Museum, and assistance was provided for a major refresh project in the Antarctic Gallery at Lyttelton Museum.

In addition to providing this support and mindful of the significant contribution our contributing local authorities provide, the Museum has for the last two years toured shows to libraries in these areas. This year, the A C Barker photographic display *Out of the Darkroom* was viewed by 66,346 visitors when on display at the Leeston, Rangiora and Amberley libraries.



Collections Technician Michael Davies cataloguing Hannah Kidd's *Buller's Hunger for the Wild* sculpture

# Our Collections

Many significant objects were acquired during the year, including an 11 page document handwritten by Robert Falcon Scott that details his plans for the southern journey to the Pole.

Other significant acquisitions include crockery and cutlery from the *Terra Nova*; medals, documents and photographs relating to eminent geologist Dr Brian Mason; a moa bone harpoon head with provenance to Banks Peninsula; a specimen of the early penguin *Waimanu tuatahi* (bones released from rock) and a collection of archaeological taonga excavated by Francis Ryman. Also acquired was a significant collection of 22 pounamu boulders which involved staff participation at a ceremonial blessing prior to their journey to the Museum.

All of these objects and the several thousand more donated by members of the public are researched and documented thoroughly by Curatorial and Collections staff. Concerted efforts have been made by the Museum in the past five years to address our backlog of cataloguing objects collected over the past 140 years onto the Vernon database. The Collection Services and Curatorial teams, and many volunteers, have been responsible for creating or verifying 121,437 backlog records against a target of 80,000 for the financial year. All of this helps the Museum to increase knowledge of the collections, making it possible for us to provide better care for our objects and ensure they are more accessible to the public.

The Vertebrate Collection and Invertebrate Collection Projects have been a focus this year. The Invertebrate Collection now has improved documentation and storage for our New Zealand insect specimens. To date, 109,812 specimens have been catalogued. The upgrading of this store with new cabinets, along with the move to new acid-free boxes has also enhanced this collection. Work has also progressed on the Vertebrate Project with the cataloguing and verifying of 40,942 skins, mounts and bird specimens. In addition, 24,000 moa specimens were catalogued as the result of a special project with separate funding. Research into appropriate storage for the egg collection has been concluded, and new egg storage cabinets are to be installed in the coming year. These collections involve staff examining and working with thousands of individual specimens, collating data and adding information to our database. The process is time consuming, as accuracy is paramount, but the end result is that we have gained an extensive knowledge of our scientific collections which will be of immense benefit to researchers and visitors in the future.

In addition, two major studies were carried out on collections and storage during the year which involved a review of six collection stores (building on the six that had been completed in the previous year). Storage conditions are of great concern for the Museum, as they are highly influential on the level of long term care we can provide for our collections and this review helped highlight the many areas that need attention. Similarly with such a backlog

of documentation requiring entering onto our database it was essential to carry out a survey of the entire collection in order to assess what needs to be done. Both of these pieces of research have fed into a Collections Management master plan which will enable us to set clearer priorities for our work programmes over future years.

Working within the constraints of budgets and resources, we endeavour to ensure improvements in our standards of care of collections. This has included making supports and boxes for objects, improving object labels, liaising with shelving contractors, and trialling new innovations, such as a rubber seal system on mobile shelving. Staff continued to monitor environmental conditions by downloading information from dataloggers, checking pest traps, monitoring for insects, servicing portable dehumidifiers, and carrying out regular surveillance of storage areas. Alongside storage, the environment, and preventive care, conservation is an essential element in the way the Museum protects its collections and carries out treatments as required.

A revision of the Museum's cleaning processes has led to a new approach to caring for our objects in storage and on display in the past year. This year the Collection Services and Exhibitions staff trialled a system for tackling the cleaning of objects on display in two intensive weeks. In addition, behind the scenes a similar intensive programme for cleaning storage areas has been implemented with both Collections and the Protective Services team involved. These processes sit alongside the project-based cleaning of the Discovery Centre and the Paua Shell House display. Regular cleaning of our collections, whether in storage or on display, is necessary to combat the dust and pollutants that are a natural result of a busy building. Careful cleaning helps to improve our presentation of collections, but more importantly ensures that they are well cared for, and less susceptible to damage.

The Museum website has been updated to include a new section with enhanced information on the Museum's collections. Visitors to the website can find out about the Museum's collecting themes, the stories behind each of the objects in the set of nine iconic images showcased in the 'Museum Experiences' section, as well as images and information on recent acquisitions.

In addition to our own collections, the Museum has a close association with the Antarctic Heritage Trust (AHT), and works in partnership to care for the collection of objects which have been removed from the Ice, liaises with them regarding the work being done by their conservators in Antarctica, and manages the data they produce.

# Our Research

Research outputs over the past 12 months come from three distinct areas. The first of these is research carried out by the curators.

This involves collections based research and scholarly publications as well as adjunct teaching and student supervision at the University of Canterbury. The second area is research undertaken by the Museum's Research Fellows and the third is research carried out by external parties that is facilitated by the Museum.

A large number of peer-reviewed papers were submitted during the 12 month period and over 30 were published, including two in the *Proceedings of the National Academy of Sciences*. The Curator of Vertebrate Zoology had an outstanding year with 15 reviewed papers achieved. Our curators were also contracted to provide advice to the Ministry of Fisheries and Department of Conservation and acted as expert examiners for the Ministry for Culture and Heritage.

Two of the most significant areas of our research received external funding. The first of these initiatives is a five year National Institute of Water and Atmospheric Research (NIWA) funded project to research the population demography and spatial biology of the albatross species that breed on the Chatham Islands. This internationally important work will enable fisheries managers to effectively mitigate any detrimental effects that fishing may be having on these majestic birds.

The Mason Foundation provides the funding for the second significant research project, the study of the koiwi tangata from Wairau Bar. Progress here has seen the results of human bone isotopes being analysed and will allow the reconstruction of a human dietary baseline for the Wairau people. A similar process is underway for isotopes of human tooth enamel to identify the possibility of 'immigration' amongst the people. In addition to this research project, Canterbury Museum has contracted a Research Associate in Archaeology to produce an analysis of the archaeological material from Museum excavations at Wairau Bar. The results from this additional work will also help to enhance our understanding of this significant site.

Another project being undertaken by the Research Associate in Archaeology involves the analysis and writing up of the archaeological investigations carried out by the Canterbury Museum Archaeological Society at Wakanui during the 1970s. The results of this initiative will be publications, conference publications and journal articles as well as a number of public presentations.

In addition, curators presented the results of their research at a number of significant conferences and shared their knowledge with many community groups, school and tertiary students.

The Research Fellows continue to provide excellent outputs from their endeavours with four peer-reviewed papers published in Volume 23 of *Records of the Canterbury Museum*. They also provided invaluable assistance to the upgrade of the invertebrate store. Advice and guidance was given with the sorting of specimens into taxonomic order as well as the repair of damaged insects.

This year the *Records of the Canterbury Museum* became available for download in pdf format from the Museum website for the first time. Visitors to the site can also find out information about the Museum's current Research Fellows, their fields of interest and special projects.

Museum staff facilitated access for 138 national and international researchers wishing to view objects from our collection. As well as providing these visitors with a high level of customer service, we ensured that any additional information about our objects they were able to provide was captured for future use.



Curator of Pictorial Collections  
Kerry McCarthy with glass plate  
negative



Long-serving staff member,  
Cleaner Bernard Johns

# Our People and Work Environment

The Museum has had another successful year with respect to Training and Development. Over 3,000 training hours were attained, 20 per cent above target, and 97 per cent of our staff met at least 95 per cent of their training goals.

To support this training the Museum has a defined Strategic Training and Development Programme, and this year saw staff from all groups undertake customer service, Treaty of Waitangi and Te Reo training. In addition, training was also undertaken in first aid, fire safety, armed hold-up awareness, visitor accessibility, collections handling, Floor Warden duties, fire extinguisher familiarisation, manual handling, ergonomic awareness assessments, and hazardous substance spill training.

Staff have also been involved in the Aviation, Tourism and Travel Training Organisation (ATTTO) Museum Practice qualification, with another seven staff now qualified. In addition, the National Certificate in Business - First Line Management was introduced this year and three managers are currently enrolled in this programme.

The Protective Services Group continued to effectively manage the ongoing facilities maintenance agreements for the Museum complex and ensured that all monthly Independent Qualified Persons (IQP) and Building Warrant of Fitness (BWF) checks were completed on time and to a high standard. Associated with this were the routine six-monthly fire evacuation exercises and the issue of the annual Hazardous Substances Test Location Certificate.

A particular building challenge this year was the reinstatement to working order, at minimal cost, of the majority of the air conditioning plant in the Robert McDougall Gallery at Canterbury Museum. This was done in anticipation of *The Heart of the Great Alone* exhibition from the Royal Collection, which came with very specific requirements around environmental conditions.

In recognition of the sustainability initiatives implemented within the Museum, Canterbury Museum achieved the Qualmark Enviro-Silver Award status for the first time. Also, as a Target Sustainability business member of Christchurch City Council, the Museum was profiled in *The Press*, enabling us to publicise our achievements with respect to resource efficiencies.

Waste sent to landfill reduced from an estimated 234m<sup>3</sup>/year in 2008-09 to 117m<sup>3</sup>/year in 2009-10. This is a 50 per cent reduction in waste being sent to landfill annually.

Recycling has increased from an estimated 72m<sup>3</sup>/year in 2008-09 to 123m<sup>3</sup>/year in 2009-2010, a 71 per cent increase in recycling. In addition, improvements were made to the heating and ventilation which are expected to save at least 200,000 kWh per year of electricity. As part of our sustainability drive and also our outreach programme, other museums and historical societies within the Canterbury region were offered and accepted used furniture and fixtures surplus to our requirements.

The Museum Café received a face-lift during the year – from tired to modern in the space of a week. Visitors can now relax and enjoy the panoramic views of the Botanic Gardens in fresh, bright and attractive surroundings.

## Volunteers

Without the support of our volunteers, much of the work on collections would not be possible. We are indeed fortunate to have such a dedicated group who invested 10,743 hours of their free time to help achieve the Museum's goals. We are particularly grateful to the 38 adult volunteers who have worked across the areas of Anthropology, Pictorial, Manuscripts, Antarctic, Decorative Arts, Geology, Zoology and Education, and to the 16 young volunteers who have assisted with the four school holiday programmes.

The contribution of our volunteers was acknowledged with a Volunteer Recognition Award for Sally Burrage, and a Christchurch City Council Civic Award for Baden Norris, both long-standing Emeritus Curators at our Museum.

## Canterbury Museum Friends

Membership of the Canterbury Museum Friends remains constant with good attendances at monthly coffee morning lectures and continued commitment to assist with the purchase of collection items. Recent purchases include: three rare early New Zealand documents on parchment contributing and appointing Frederick Strouts to various ranks in the Canterbury Yeoman Cavalry Volunteers - two of which were signed by Governor George Grey and the third by Governor G F Bowen; Strouts' handwritten shipboard diary 1869 and his 19th century folding wooden cased compass. Frederick Strouts was an early Christchurch architect and surveyor and one of the founders of the Canterbury Association of Architects. These items will join the Strouts Collection of Architecture - plans, photographs and maps - all of which provide an important record of the built environment of Christchurch.

The Friends also purchased an important artefact of Antarctic and Polar History, namely the mail box from *Terra Nova* which was used by the British Antarctic Expedition 1910-17.

It is with sadness we note the death of Mr Brian Harman, who for many years acted as the Friends' honorary solicitor.

# Publications

- Cadenhead N** (2009) Treasures from the Canterbury Museum: Arthur Beaumont *Antarctic* 27 (3) 58 - 59
- Cadenhead N** (2009) Book Review of 'With Scott in the Antarctic', *Antarctic* 27 (3) p60
- Cadenhead N** (2009) Fossil molluscs from Seymour Island Antarctica, *Antarctic* 27 (4) p63
- Cadenhead N** (2010) Antarctic Explorer Clothing *Berg Encyclopaedia of World Dress and Fashion* 10 (9)
- Cadenhead N** (2010) Phillip Law *Antarctic* 28 (1) p36
- Clark J M** (2009) A new *Thyreophagus* mite from honeydew scale insects on black beech (*Nothofagus*). *Records of the Canterbury Museum* 23: 1-9
- Clark J M** (2009) A description of the heteromorphic deutonymph (hypopus) of *Myianoetus antipodus* Fain and Galloway, 1993 (Acari: Astigmata: Histiostomatidae). *Records of the Canterbury Museum* 23: 31-33
- Condon J** (2009) Penguin Patties and Seal Outlets: Menus from the Antarctic Expeditions of Scott and Shackleton in *The New Zealand Ephemerist*: 3
- Condon J** (2010) Exploring Antarctica in the Documentary Research Centre *Antarctic* 28 (1)
- Buckley H, Tayles N, Halcrow S, Robb K, **Fyfe R** (2010) The People of Wairau Bar: a Re-examination. *Journal of Pacific Archaeology* 1 (1) 1-20
- Barnes K M, **Hiller N** (2010) *iFirst* article, The taphonomic attributes of a Late Cretaceous plesiosaur skeleton from New Zealand. *Alcheringa*: 1-12
- Hiller N**, (2009) Brachiopods from the Ostrea Bed (Broken River Formation), Upper Cretaceous of North Canterbury. In: D Barrell & A Tulloch (Eds) *Geological Society of New Zealand & New Zealand Geophysical Society Joint Annual Conference Programme & Abstracts*. Geological Society of New Zealand Miscellaneous Publication 128A: 90.
- Hiller N**, (2010) Brachiopods in a Late Cretaceous oyster reef. In: G R Shi, I G Percival, R R Pierson & E A Weldon (Eds) *Program & Abstracts, 6th International Brachiopod Congress, 1-5 February 2010, Melbourne, Australia*. Geological Society of Australia Abstracts 95: 53.
- Hitchings T** (2009) Three new species of *Deleatidium* (*Deleatidium*) (Ephemeroptera: Leptophlebiidae) from New Zealand. *Records of the Canterbury Museum* 23: 35-50
- Mosley B** (2010) The Canterbury Museum Archaeological Society at Wakanui: Forty years on. Paper presented at the NZ Archaeological Association annual conference, Westport, 9-13 June 2010.
- Norris B** (2010) Lyttelton's Polar Gallery *Antarctic* 28 (3) p3
- Pollard S D** (2010) Why do crab spiders hug their prey? *University of Canterbury Field Stations Annual Report* 2009, p14
- Cross F R, Jackson R R, **Pollard S D** (2009) Vampire spiders: finding a needle in a haystack. 33rd Annual American Arachnological Society Conference, Arkansas Tech University, Arkansas, USA
- Cross F R, Jackson R R, **Pollard S D** (2009) How blood-derived odour influences mate-choice decisions by a mosquito-eating predator. *Proceedings of the National Academy of Sciences of the United States of America* 106: 19416-19419
- Quérée J** (2010) Ersatz: German paper textiles of World War I (paper given at "Hanging by a Thread", the 9th Annual Symposium of the New Zealand Costume & Textiles Association, Lower Hutt 11-13 June 2010)
- Scofield R P** (2010) Contributing editor Ornithological Society of New Zealand Checklist Committee. *Checklist to the Birds of New Zealand*. Caxton, Christchurch 222 pp.
- Scofield R P** (2009) Family Callaeatidae (Wattlebirds). *Handbook of the Birds of the World*. (del Hoyo J, Elliott A, Christie D A eds). Vol 14.
- Scofield R P**, Ashwell, K (2009) Rapid Somatic Expansion causes the Brain to Lag Behind: The case of the Brain and Behaviour of New Zealand's Haast's Eagle (*Harpagornis moorei*). *Journal of Vertebrate Palaeontology* 29(3):1-14.
- Scofield R P** (2009) Procellariiform Extinctions in the Holocene: Threat Processes and Wider Ecosystem-Scale Implications. pp 151- 166. *Holocene Extinctions* (S Turvey, ed.) Cambridge University Press, Cambridge. 364 pp.
- Worthy, T H, Tennyson A J D, Archer M, **Scofield R P** (2010) First record of Palaelodus (Aves: Phoenicopteriformes) from New Zealand. *Proceedings of the VII International Meeting of the Society of Avian Paleontology and Evolution*, ed. W E Boles and T H Worthy. *Records of the Australian Museum* 62(1): 77-88. doi:10.3853/j.0067-1975.62.2010.1545
- Scofield R P**, Worthy T H, Tennyson, A J D (2010) A heron (Aves: Ardeidae) from the Early Miocene St Bathans fauna of southern New Zealand. *Proceedings of the VII International Meeting of the Society of Avian Paleontology and Evolution*, ed. W E Boles and T H Worthy. *Records of the Australian Museum* 62(1): 89-104. doi:10.3853/j.0067-1975.62.2010.1542
- Tennyson A J D, Worthy T H, Jones C M, **Scofield R P**, Hand S J (2010) Moa's Ark: Miocene fossils reveal the great antiquity of moa (Aves: Dinornithiformes) in Zealandia. *Proceedings of the VII International Meeting of the Society of Avian Paleontology and Evolution*, ed. W E Boles and T H Worthy. *Records of the Australian Museum* 62(1): 105-114. doi:10.3853/j.0067-1975.62.2010.1546

- Worthy T H, Tennyson A J D, **Scofield R P** (2010) An Early Miocene fossil acanthisittid wren (Aves: Acanthisittidae) from the St Bathans Fauna, Otago, New Zealand. *Journal of Vertebrate Palaeontology* 30: 479-498.
- Allentoft M E, Bunce M, **Scofield R P**, Hale M L, Holdaway R N (2010) Highly skewed sex ratios and biased fossil deposition of moa: ancient DNA provides new insight on New Zealand's extinct megafauna. *Quaternary Science Reviews* 29: 753-762.
- Boessenkool S, Star B, **Scofield R P**, Seddon P J, Waters J M (2009) Lost in translation or deliberate falsification? Genetic analyses reveal erroneous museum data for historic penguin specimens. *Proceedings of the Royal Society B*. 277: 1057-1064.
- Shepherd L D, Cooper J, Haile J, **Scofield R P**, Tennyson A J D, Worthy T H (2009) Selection of a neotype for *Apteryx mantelli* Bartlett, 1852, with the support of genetic data. *Bulletin of the British Ornithologists Club* 129: 195-197
- Bunce M, Worthy T H, Phillips M, Holdaway R N, Willerslev E, Haile J, Shapiro B, **Scofield R P**, Drummond A, Kamp P, Cooper A (2009) The evolutionary history of the extinct ratite moa and New Zealand palaeogeography revealed by ancient DNA. *Proceedings of the National Academy of Sciences* 106: 20646-20651.
- Scofield R P**, Ashwell K (2009) Rapid Somatic Expansion causes the Brain to Lag Behind: The case of the Brain and Behaviour of New Zealand's Haast's Eagle (*Harpagornis moorei*). *Journal of Vertebrate Palaeontology* 29(3): 1-14.
- Lawrence H, **Scofield R P**, Millar C, Lambert D (2009) DNA sequencing detects an additional museum specimen of the Chatham Island Taiko (*Pterodroma magentae*). *Notornis* 55:
- Lee M S Y, Hutchinson M N, Worthy T H, Archer M, Tennyson A J D, Worthy J P, **Scofield R P** (2009) Miocene skinks and geckos reveal long-term conservatism of New Zealand's lizard fauna. *Biology Letters* 5: 833-837.
- Bourdon E, Castanet J, de Ricqlès A, **Scofield R P**, Tennyson A, Lamrous H, Cubo J (2009) Bone Growth Marks Reveal Protracted Growth in New Zealand Kiwi (Aves, Apterygidae). *Biology Letters* 5: 639-642.
- Fox B W, Henderson G, **Ward J B** and Ward G M (2009) Lepidoptera of Matawai Park, Canterbury. *Records of the Canterbury Museum* 23: 11-14

# Financial Statements

**19**

Statement Of Comprehensive Income  
Statement of Changes in Equity

**20**

Statement of Financial Position

**21**

Statement of Cash Flow

**22**

Notes to the Financial Statements

**39**

Statement of Service Performance

**40**

Audit Report

# Statement of Comprehensive Income

## CANTERBURY MUSEUM TRUST BOARD STATEMENT OF COMPREHENSIVE INCOME

For the year ended 30 June 2010

	Note	2010 \$	2009 \$	Budget 2010 \$
<b>Income</b>				
Revenues	2	7,109,214	7,247,615	6,919,709
Other income	2	920,625	1,228,320	880,000
		8,029,839	8,475,935	7,799,709
<b>Expenditure</b>				
Employee benefits expense	3	3,678,421	3,555,631	3,603,668
Depreciation and amortisation	3	1,452,633	1,485,733	1,335,000
Finance cost		166,395	166,395	170,000
Other expenses	3	3,384,249	3,600,910	2,887,324
		8,681,698	8,808,669	7,995,992
<b>Net profit/(loss)</b>		<b>(651,859)</b>	<b>(332,734)</b>	<b>(196,283)</b>
<b>Other comprehensive income</b>				
Gain on property revaluations		5,600,000	-	
Change in value of available-for-sale financial assets		35,893	47,167	
Sale of available-for-sale financial assets		(25,723)	(895,765)	
<b>Total comprehensive income</b>		<b>4,958,311</b>	<b>(1,181,332)</b>	

## CANTERBURY MUSEUM TRUST BOARD STATEMENT OF CHANGES IN EQUITY

For the year ended 30 June 2010

Opening balance	44,222,689	45,404,021
Total comprehensive income	4,958,311	(1,181,332)
<b>Closing balance</b>	<b>49,181,000</b>	<b>44,222,689</b>

The accompanying notes form part of these financial statements.

# Statement of Financial Position

## CANTERBURY MUSEUM TRUST BOARD STATEMENT OF FINANCIAL POSITION

As at 30 June 2010

	Note	2010 \$	2009 \$
<b>Current assets</b>			
Cash and cash equivalents		2,048,973	1,577,288
Debtors and other receivables	4	493,577	318,912
Other financial assets	5	9,042,837	9,162,711
		<b>11,585,387</b>	<b>11,058,911</b>
<b>Non current assets</b>			
Other financial assets	5	10,353,789	10,155,745
Property, plant and equipment	6	35,599,098	31,088,957
Intangible assets	7	14,918	14,275
		45,967,805	41,258,977
<b>Total assets</b>		<b>57,553,192</b>	<b>52,317,888</b>
<b>Less liabilities</b>			
<b>Current liabilities</b>			
Creditors and other payables	8	461,514	359,014
Employee entitlements	9	228,106	216,685
Grants received in advance	10	4,977,012	4,813,772
		<b>5,666,632</b>	<b>5,389,471</b>
<b>Non current liabilities</b>			
Employee entitlements	9	155,560	155,727
Term loans	11	2,550,000	2,550,000
		<b>2,705,560</b>	<b>2,705,727</b>
<b>Total liabilities</b>		<b>8,372,192</b>	<b>8,095,199</b>
<b>Equity</b>			
Reserves	12	45,926,059	39,619,154
Retained earnings	13	3,254,941	4,603,535
		<b>49,181,000</b>	<b>44,222,689</b>
<b>Total liabilities and equity</b>		<b>57,553,192</b>	<b>52,317,888</b>



Director  
8 November 2010



Board Chairperson

The accompanying notes form part of these financial statements.

# Statement of Cash Flow

## CANTERBURY MUSEUM TRUST BOARD STATEMENT OF CASH FLOW

For the year ended 30 June 2010

	Note	2010 \$	2009 \$
<b>Cash flows from operating activities</b>			
Levy and ex gratia payments		6,033,867	5,746,536
Donations and grants		644,200	723,451
Other revenue		469,094	1,321,890
Interest and dividends on financial instruments		832,243	1,147,158
Payments to suppliers of goods and services		(3,277,446)	(3,127,865)
Payments to employees		(3,667,167)	(3,516,308)
Interest on building loan		(166,395)	(166,395)
<b>Net cash flows from operating activities</b>	<b>14</b>	<b>868,396</b>	<b>2,128,467</b>
<b>Cash flows from investing activities</b>			
Sale of financial instruments		1,051,431	3,814,088
Purchase of property, plant and equipment		(363,417)	(623,440)
Purchase of financial instruments		(1,084,725)	(5,293,311)
<b>Net cash flows from investing activities</b>		<b>(396,711)</b>	<b>(2,102,663)</b>
<b>Cash flows from financing activities</b>			
<b>Net cash flows from financing activities</b>		-	-
<b>Net increase/(decrease) in cash held</b>		<b>471,685</b>	<b>25,804</b>
<b>Cash and cash equivalents at beginning of year</b>		<b>1,577,288</b>	<b>1,551,484</b>
<b>Cash and cash equivalents at end of year</b>		<b>2,048,973</b>	<b>1,577,288</b>

# Notes to the Financial Statements

## CANTERBURY MUSEUM TRUST BOARD NOTES TO THE FINANCIAL STATEMENTS

For the year ended 30 June 2010

### 1 SUMMARY OF SIGNIFICANT ACCOUNTING POLICIES

#### a Reporting entity

The Canterbury Museum Trust Board (the "Museum") is a non-profit-making permanent institution, founded by the people of Canterbury for the service and development of their community with a particular responsibility for the natural and cultural heritage of the wider Canterbury region. The Museum is created under the Canterbury Museum Trust Board Act 1993. It is located at Rolleston Avenue, Christchurch, New Zealand.

These financial statements are for the reporting entity, Canterbury Museum Trust Board, and are prepared pursuant to Section 28 of the Canterbury Museum Trust Board Act 1993.

#### b Measurement base

The Museum followed the accounting principles recognised as appropriate for the measurement and reporting of profit and financial position on a historical cost basis, as modified by the fair value measurement of certain items of property, plant and equipment and available-for-sale financial assets.

These financial statements have been prepared in accordance with generally accepted accounting practice in New Zealand. They comply with New Zealand equivalents to International Financial Reporting Standards (NZ IFRS) and other applicable Financial Reporting Standards as appropriate for public benefit entities.

The information is presented in New Zealand dollars, which is the Museum's functional and presentation currency.

#### c Judgement and estimation uncertainty

The preparation of financial statements of necessity involves judgement and estimation. The estimates and associated assumptions are based on historical experience and various other factors that are believed to be reasonable. Actual results may differ from these estimates. The key sources of estimation that have had the most significant effect on the amounts recognised in the financial statements are presented in Note 19.

#### d Specific accounting policies

The following specific accounting policies which materially affect the measurement of profit and financial position have been applied:

##### i Revenue recognition

The Museum has the following revenue recognition policies:

###### Local authority operating levies

Local authority operating levies are recognised as revenues when levied.

###### Grants and donations

Grants and donations, including government grants, are recognised as revenue when received. When there are conditions attached to the grants and donations, revenues are recognised when the conditions for their use are met. Unspent grants and the related interest earned on these funds are recorded as grants received in advance.

###### Bequests

Bequests are recognised in the income statement upon receipt. Where contributions recognised as revenue during the year were obtained on the restriction that they be expended in a particular manner or used over a particular period, and those restrictions were undischarged as at the reporting date, the amounts pertaining to those undischarged restrictions are transferred to trust and bequests reserve in equity and the nature of such restrictions are disclosed in the notes to the financial statements.

###### Discovery income, image service income and other revenues

Discovery income, image service income and other operating revenues are recognised when services have been performed.

###### Lease income

Revenue is recognised on a straight-line basis over the rental period.

**Interest income**

Interest is recognised in the income statement as it accrues using the effective interest rate method.

**Dividend income**

Dividend from investments is recognised when the shareholder's rights to receive payment have been established.

**ii Budget figures**

The budget figures are from the Canterbury Museum Trust Board Annual Plan that was approved by the Board at its meeting on 8 May 2009. The reconciliation of actual net profit to budgeted net profit is presented in Note 15.

**iii Offsetting of income and expenses**

Income and expenses are not offset unless required or permitted by an accounting standard. Items of income and expenses are offset when offsetting reflects the substance of the transaction or other event. In addition, gains or losses arising from a group of similar transactions are reported in a net basis, unless items of gains or losses are material. In which case, they are reported separately.

**iv Income tax**

The Museum has charitable status and accordingly no taxation expense or liability is recognised in the financial statements.

**v Cash and cash equivalents**

Cash and cash equivalents include cash on hand, cash in banks and short term deposits with original maturities of three months or less that are readily convertible to known amount of cash and which are subject to an insignificant risk of changes in value.

**vi Debtors**

Debtors are recognised initially at fair value and subsequently measured at amortised cost using the effective interest method, less provision for impairment. A provision for impairment of debtors is established when there is objective evidence that the Museum will not be able to collect all receivables. The amount of the provision is the difference between the asset's carrying amount and the present value of estimated future cash flows, discounted at the effective interest rate. The provision, if any, is recognised in the income statement.

**vii Financial instruments**

Financial instruments are transacted on a commercial basis to derive an interest yield/cost with terms and conditions having due regard to the nature of the transaction and the risks involved. All financial instruments are accounted for on a settlement basis. They are classified in one of the following categories at initial recognition: loans and receivables, financial assets and financial liabilities at fair value through profit or loss, available-for-sale financial assets, held-to-maturity investments, and other financial liabilities.

**Loans and receivables**

Assets in this category are non-derivative financial assets with fixed determinable payments that are not quoted in an active market.

They include:

- cash and cash equivalents (refer to item v above)
- debtors (refer to item vi above)
- accrued interest income (refer to item i above)
- GST refundable

**Financial assets and liabilities at fair value through profit or loss**

Assets and liabilities in this category are either held for trading or are managed with other assets and liabilities and are accounted for and evaluated on a fair value basis. The Museum has not classified any financial instrument as a financial liability at fair value through comprehensive income.

**Available-for-sale financial assets**

Available-for-sale financial assets are those non-derivative financial assets that are designated as available for sale or are not classified as loans and receivables, held-to-maturity investments or financial assets at fair value through profit or loss. Assets in this category include investments in equity instruments. The fair value of these instruments are based on quoted market prices.

# Notes to the Financial Statements

## Held-to-maturity investments

Assets in this category are measured at amortised cost. The Museum has classified its bank term deposits and fixed term investments as held-to-maturity investments.

## Other financial liabilities

This category includes all financial liabilities other than those at fair value through profit or loss. Liabilities in this category are measured at amortised cost. They represent:

- liabilities for goods and services provided to the Museum prior to the end of the financial year that are unpaid and arise when the Museum becomes obliged to make future payments. These amounts are unsecured.
- term loans with determinable repayment terms and interest rate. These loans are unsecured.

Other financial liabilities include:

- creditors
- employee entitlements (refer to item xi below)
- grants received in advance (refer to item i above)
- retirement gratuity (refer to item xi below)
- term loans

## viii Property, plant and equipment

All property, plant and equipment are stated at cost less accumulated depreciation and impairment. Cost includes expenditure that is directly attributable to the acquisition of the item. Repairs and maintenance are charged against income as incurred. Depreciation is calculated on a straight line basis so as to write off the net cost amount of each asset over its expected useful life to its estimated residual value. The Board reviews depreciation rates and adjusts them to more appropriately reflect the consumption of economic benefits. The depreciation rates applied are as follows:

	Rate
Buildings	2% – 10%
Furniture, fittings and equipment	10% – 33%

When an item of property, plant and equipment is disposed of, any gain or loss is recognised in the income statement and is calculated as the difference between the net disposal proceeds and the carrying value of the item.

Land and buildings are revalued on a cyclical basis at least every five years by an independent valuer. Any accumulated depreciation at the date of the revaluation is eliminated against the gross carrying amount of the asset and the net amount is restated to the revalued amount. If the asset's carrying amount is increased as a result of a revaluation, the increase is credited directly to equity under the heading "Asset Revaluation Reserve". However, the increase is recognised in profit or loss to the extent that it reverses a revaluation decrease of the same asset previously recognised in profit or loss. Revalued assets are depreciated over the remaining useful life. On the subsequent sale or retirement of a revalued property, the attributable revaluation surplus remaining in the asset revaluation reserve, net of any related deferred taxes, is transferred directly to retained earnings.

## Heritage assets

Heritage assets include collection items or artefacts of cultural or historical significance. The cost of acquisition of heritage assets is charged to the statement of comprehensive income. During the year, the acquisition cost of collection items amounted to \$1,045,193 (2009: \$609,637).

It is the policy of the Museum to write off collection acquisitions and not attribute a monetary value to items gifted to the collection. The classification of the collections as a heritage asset is based on the premise that the collections are held in trust in perpetuity for the benefit of the public.

New Zealand Equivalent to International Accounting Standard No 16 (NZ IAS 16) Property, Plant and Equipment requires that where an asset, e.g. collection item or artefact of cultural or historical significance, is acquired at no cost, or for a nominal cost, the asset is capitalised at its fair value as at the date of acquisition. NZ IAS 16 has not been followed because the Board considers that the fair values of the collection items cannot be measured reliably. Usually, gifts to the collection are unique items that have iconic status or are historic and irreplaceable or sacred to particular communities, with no market, so no financial value can be ascribed.

The Museum holds in excess of two million individual collection items. To comply with the requirements of NZ IAS 16 the value of these items would need to be assessed on an annual basis to identify possible impairment, which is required to be undertaken on an asset by asset basis. The costs of undertaking such an exercise and maintaining the information accurately would place a large financial and administrative burden on the Museum, however a project has recently been undertaken to provide an updated inventory of the collection items. Included in the inventory are updated valuations of the collection items which it is hoped will meet the accounting standards in the future, should the Board wish to consider a change in accounting policy.

**ix Intangible assets**

Computer software are finite life intangibles and are recorded at cost less accumulated amortisation and impairment. Amortisation is charged on a straight line basis over their estimated useful lives of 3 years and reported within the Statement of Comprehensive Income. The estimated useful life and amortisation method is reviewed at the end of each annual reporting period.

**x Impairment of non-financial assets**

Property, plant and equipment and intangible assets are tested for impairment annually and whenever there is an indication of impairment. If the recoverable amount of an item of property, plant and equipment and intangible asset is less than its carrying amount, the item is written down to its recoverable amount. The write down of an item recorded at historical cost is recognised as an expense in the statement of comprehensive income.

Recoverable amount is the higher of fair value less costs to sell and value in use. In assessing value in use, the estimated future cash flows are discounted to their present value using a pre-tax discount rate that reflects the current market assessments of the time value of money and the risks specific to the asset for which the estimates of future cash flows have not been adjusted.

For purposes of assessing impairment, assets are grouped at the lowest levels for which there are separately identifiable cash flows (cash-generating units).

**xi Employee entitlements**

Provision is made for benefits accruing to employees in respect of salaries and wages, annual leave, alternate leave, sick leave and long service leave when it is probable that settlement will be required and they are capable of being measured reliably.

Provisions made in respect of employee benefits expected to be settled within 12 months, are measured at their nominal values using the remuneration rate expected to apply at the time of settlement. Accrual for sick leave is based on the unused entitlement accumulated at balance date and expected to be utilised in the future.

Provisions made in respect of employee benefits which are not expected to be settled within 12 months are measured as the present value of the estimated future cash outflows to be made by the Museum in respect of services provided by employees up to balance date.

**xii Borrowings**

Borrowings, which consist of term liabilities, are stated initially at fair values, net transaction costs incurred. Subsequent to initial recognition, borrowings are measured at amortised cost with any difference between the initial recognised amount and the redemption value being recognised in profit or loss over the period of the borrowing using the effective interest rate method.

All borrowing costs are recognised as expense in the period in which they are incurred.

**xiii Goods and services tax (GST)**

The financial statements have been prepared using GST exclusive figures with the exception of receivables and payables which have been shown inclusive of GST in the balance sheet.

**e Changes In Accounting Policies**

There have been no changes in accounting policies, which have been applied on bases consistent with prior years.

The Museum has adopted the following revision to accounting standards during the financial year, which have had only a presentational or disclosure effect: NZ IAS 1 Presentation of Financial Statements (Revised 2007) replaces NZ IAS 1 Presentation of Financial Statements (Issued 2004). The revised standard requires information in financial statements to be aggregated on the basis of shared characteristics and introduces a statement of comprehensive income.

# Notes to the Financial Statements

The Museum has decided to prepare a single statement of comprehensive income for the year ended 30 June 2010 under the revised standard. Financial statement information for the year ended 30 June 2009 has been restated accordingly. Items of other comprehensive income presented in the statement of comprehensive income were previously recognised directly in the statement of changes in equity.

**f Standards, amendments and interpretations issued but that are not yet effective**

Standards, amendments, and interpretations issued but not yet effective that have not been early adopted, and which are relevant to the Museum, are:

**i NZ IFRS 9 Financial Instruments**

Financial Instruments will eventually replace NZ IAS 39 Financial Instruments: Recognition and Measurement. NZ IAS 39 is being replaced through the following 3 main phases: Phase 1 Classification and Measurement, Phase 2 Impairment Methodology, and Phase 3 Hedge Accounting. Phase 1 on the classification and measurement of financial assets has been completed and has been published in the new financial instrument standard NZ IFRS 9. NZ IFRS 9 uses a single approach to determine whether a financial asset is measured at amortised cost or fair value, replacing the many different rules in NZ IAS 39.

The approach in NZ IFRS 9 is based on how an entity manages its financial instruments (its business model) and the contractual cash flow characteristics of the financial assets. The new standard also requires a single impairment method to be used, replacing the many different impairment methods in NZ IAS 39. The new standard is required to be adopted for the year ended 30 June 2014.

The Museum has not yet assessed the effect of the new standard and expects it will not be early adopted.

	2010 \$	2009 \$	Budget 2010 \$
<b>2 REVENUES AND OTHER INCOME</b>			
<b>a Revenues</b>			
Local authority operating levy and ex gratia payments	6,033,867	5,746,536	6,033,863
Donations, grants and bequests	461,578	456,927	320,984
Grant from New Zealand Lotteries Grants Board	19,382	27,221	12,603
Discovery income	84,717	94,545	102,444
Lease income	69,460	70,297	80,000
Image Service income	17,665	18,935	25,000
Other trading income	422,545	833,155	344,815
	<b>7,109,214</b>	<b>7,247,615</b>	<b>6,919,709</b>

The following grants from the Lottery Environment and Heritage Committee was recognised as income for the year ended 30 June 2010.

Application 241938 \$19,382 (2009 \$27,221) of a total of \$180,000 to purchase a museum storage system for the Invertebrate Collection and salary for a Collection Technician to transfer the collection into the new system and record data on the Museum database.

	2010 \$	2009 \$	Budget 2010 \$
<b>b Other income</b>			
Interest income	817,312	1,002,162	790,000
Dividend income	61,944	88,811	90,000
Gain on sale of financial instruments	41,369	137,346	-
	<b>920,625</b>	<b>1,228,320</b>	<b>880,000</b>
<b>3 EXPENSES</b>			
<b>a Employee benefits expense</b>			
Salaries and wages	3,561,953	3,466,635	3,524,436
Post-employment benefits	44,313	20,834	8,000
Other short-term employee benefits	72,155	68,162	71,232
	<b>3,678,421</b>	<b>3,555,631</b>	<b>3,603,668</b>
<b>b Depreciation and amortisation</b>			
Buildings	1,267,647	1,304,678	1,183,000
Furniture, fittings and equipment	173,587	171,135	152,000
Total depreciation	1,441,234	1,475,813	1,335,000
Amortisation of intangible assets	11,399	9,920	-
	<b>1,452,633</b>	<b>1,485,733</b>	<b>1,335,000</b>
<b>c Other expenses</b>			
Audit fees for audit services	31,765	31,000	34,000
Auditor fees for other services in relation to assistance in the first-time adoption of NZ IFRS	-	5,440	-
Loss on sale of furniture, fittings and equipment	(562)	1,620	-
Unrealised loss on financial instruments	6,403	548,730	-
Other operating expenses	3,346,643	3,014,121	2,853,324
	<b>3,384,249</b>	<b>3,600,910</b>	<b>2,887,324</b>

# Notes to the Financial Statements

	2010 \$	2009 \$
<b>4 DEBTORS AND OTHER RECEIVABLES</b>		
Debtors	51,967	81,156
Provision for doubtful debts	-	-
	<b>51,967</b>	<b>81,156</b>
Accrued interest income	181,840	134,828
GST refundable	69,520	82,882
Prepayments	190,250	20,046
	<b>493,577</b>	<b>318,912</b>
<b>5 OTHER FINANCIAL ASSETS</b>		
<b>Held-to-maturity financial assets classified as current:</b>		
Bank term deposits	9,042,837	9,162,711
	<b>9,042,837</b>	<b>9,162,711</b>
<b>Held-to-maturity financial assets classified as non current:</b>		
Fixed term investments	7,865,575	8,038,031
<b>Available-for-sale financial assets classified as non current:</b>		
Investments in equity instruments	2,488,214	2,117,714
	<b>10,353,789</b>	<b>10,155,745</b>

#### **Fair value:**

##### *Bank term deposits*

The carrying amount of term deposits approximates their fair value.

##### *Fixed term investments*

Fixed term investments are recognised at amortised cost.

##### *Investments in equity instruments*

Investments in equity instruments are recognised at fair value. The fair values of listed shares are determined by reference to published current bid price quotations in an active market.

#### **Fair Value Hierarchy Disclosures**

For those instruments recognised at fair value in the statement of financial position, fair values are determined according to the following hierarchy:

Quoted market price (level 1 in accordance with NZ IFRS 7) - Financial instruments with quoted prices for identical instruments in active markets.

## 6 PROPERTY, PLANT AND EQUIPMENT

### Year ended 30 June 2009

	Land \$	Buildings \$	Furniture, fittings and equipment \$	Work-in- progress \$	Total \$
Carrying amount at 30 June 2008	1,700,000	29,282,668	376,338	591,658	31,950,664
Additions	-	481,997	266,863	190,034	938,894
Disposals	-	-	(1,620)	(323,168)	(324,788)
Impairment losses	-	-	-	-	-
Depreciation	-	(1,304,678)	(171,135)	-	(1,475,813)
<b>Carrying amount at 30 June 2009</b>	<b>1,700,000</b>	<b>28,459,987</b>	<b>470,446</b>	<b>458,524</b>	<b>31,088,957</b>

### 30 June 2009

Cost	1,700,000	36,549,457	1,817,029	458,524	40,525,010
Accumulated depreciation and impairment	-	(8,089,470)	(1,346,583)	-	(9,436,053)
<b>Carrying amount</b>	<b>1,700,000</b>	<b>28,459,987</b>	<b>470,446</b>	<b>458,524</b>	<b>31,088,957</b>

### Year ended 30 June 2010

Carrying amount at 30 June 2009	1,700,000	28,459,987	470,446	458,524	31,088,957
Additions	1,300,000	4,496,026	155,349	-	5,951,375
Disposals	-	-	-	-	-
Impairment losses	-	-	-	-	-
Depreciation	-	(1,267,647)	(173,587)	-	(1,441,234)
<b>Carrying amount at 30 June 2010</b>	<b>3,000,000</b>	<b>31,688,366</b>	<b>452,208</b>	<b>458,524</b>	<b>35,599,098</b>

### 30 June 2010

Cost	3,000,000	38,245,483	1,950,717	458,524	43,654,724
Accumulated depreciation and impairment	-	(6,557,117)	(1,498,509)	-	(8,055,626)
<b>Carrying amount</b>	<b>3,000,000</b>	<b>31,688,366</b>	<b>452,208</b>	<b>458,524</b>	<b>35,599,098</b>

# Notes to the Financial Statements

## Revaluation of land and buildings

The land and buildings were revalued to the latest valuation by W Blake ANZIV/SPINZ of Simes Limited as at 30 June 2010 in accordance with NZ IAS 16 and valuation standards issued by the New Zealand Institute of Valuers. The fair value of the land is \$3,000,000 and the building is \$29,500,000 as valued by the valuer. Valuation adjustments are reflected in Note 12.

The basis of the market valuation has been the value at which a willing buyer and willing seller shall exchange ownership of the property at an arms length transaction on valuation date. There are no limiting conditions in the valuations.

## Work-in-progress – Revitalisation Project

The balance of the work in progress relates to the planning and design stages of the Revitalisation Project which is expected to be reutilised in the current Museum Project.

The objective of the Revitalisation Project was to upgrade the Museum's buildings and services to provide better customer service, new and improved exhibitions and purpose-built storage facilities for the reserve collections.

This was to be achieved through more public arrival and circulation space, larger special exhibition areas, readily accessible lifts and staircases, improved toilet facilities, air conditioning, purpose-built education and collection storage areas, the redisplay of the blue whale skeleton, new long-term exhibitions, and access through the Museum into the Robert McDougall Gallery and then out into the Christchurch Botanic Gardens.

After eight years of planning and consultation, appeals against the Project's resource consents resulted in the consents being overturned in the Environment Court in 2007.

The Museum's operational problems and challenges which the Revitalisation Project aimed to resolve still remain. The Museum Board has begun the process to identify a new solution that will allow the Museum to operate effectively for the future.

At balance date, unspent grants in relation to the Revitalisation Project amounted to \$4,882,701 (2009: \$4,666,761) and is recorded as a liability in the balance sheet. See Note 10.

	2010 \$	2009 \$
<b>7 INTANGIBLE ASSETS</b>		
Beginning balance, software assets	14,275	14,861
Additions	12,042	9,334
Amortisation	(11,399)	(9,920)
Ending balance, software assets	<b>14,918</b>	<b>14,275</b>
Cost	211,642	199,600
Accumulated amortisation and impairment	(196,724)	(185,325)
	<b>14,918</b>	<b>14,275</b>

All intangible assets are externally acquired software.

## 8 CREDITORS AND OTHER PAYABLES

Creditors	379,760	300,101
Accrued interest expense	15,240	15,240
Other accrued expenses and payables	66,514	43,673
	<b>461,514</b>	<b>359,014</b>

	2010 \$	2009 \$
<b>9 EMPLOYEE ENTITLEMENTS</b>		
<b>Current</b>		
Annual leave	214,815	204,506
Long service leave accrual	13,943	12,728
Others	(652)	(549)
	<b>228,106</b>	<b>216,685</b>
<b>Non-current</b>		
Retirement gratuity	42,628	40,247
Long service leave accrual	112,932	115,480
	<b>155,560</b>	<b>155,727</b>
<b>10 GRANTS RECEIVED IN ADVANCE</b>		
Christchurch City Council	4,496,897	4,298,020
Selwyn District Council	385,803	368,741
NZ Lotteries Grants Board	-	19,382
Other	94,312	127,629
	<b>4,977,012</b>	<b>4,813,772</b>
<p>Grants received in advance from Christchurch City Council and Selwyn District Council represent unspent grants and accumulated interest in relation to the Revitalisation Project. Refer to Note 6 for the background of the Revitalisation Project.</p>		
<b>11 TERM LOANS</b>		
Redevelopment Loan 1995	1,500,000	1,500,000
Revitalisation Loan 1998	1,050,000	1,050,000
	<b>2,550,000</b>	<b>2,550,000</b>
<p>The Displays, Galleries and Building Redevelopment Loan 1995 is for a maximum term of 20 years (15/12/15). Interest is payable at a rate of 6.55% pa in equal half-yearly instalments.</p> <p>The Displays, Galleries and Building Revitalisation Loan 1998 is for a maximum term of 20 years (1/05/18). Interest is payable at a rate of 6.49% pa in equal half-yearly instalments.</p> <p>The lender of the Redevelopment and Revitalisation Loans is Christchurch City Council and the security is Canterbury Museum Trust Board registered stock.</p>		
<b>12 RESERVES</b>		
Asset revaluation reserve	31,428,812	25,828,812
Asset replacement reserve	8,133,625	7,038,553
Trust and bequest funds	5,023,477	5,592,868
Available-for-sale revaluation reserve	100,985	90,815
Term loan repayment reserve	1,239,160	1,068,106
	<b>45,926,059</b>	<b>39,619,154</b>

# Notes to the Financial Statements

2010  
\$

2009  
\$

The nature and purpose of the reserves and the movements thereof are presented below:

**a Asset revaluation reserve**

Beginning balance	25,828,812	25,828,812
Movements	5,600,000	-
<b>Ending balance</b>	<b>31,428,812</b>	<b>25,828,812</b>

Asset revaluation reserve represents net revaluation increments in value of land and buildings. The reserve is reduced by decrements in value of land and buildings to the extent of any credit balance existing in the asset revaluation reserve in respect of the same class of asset. The reserve is transferred directly to Retained Earnings upon disposal of the asset which the reserve relates to.

**b Asset replacement reserve**

Beginning balance	7,038,553	6,209,143
Transferred from retained earnings	1,095,072	829,410
<b>Ending balance</b>	<b>8,133,625</b>	<b>7,038,553</b>

Asset replacement reserve is intended for the Museum's capital expenditure. The reserve is increased by the amount of the depreciation expense for the year and is decreased by the amount of capital purchases during the year.

**c Trust and bequest funds**

Beginning balance	5,592,868	5,698,744
<b>Transfers from/(to) retained earnings for:</b>		
Donations, grants and bequests	241,447	236,976
Interest on trust and bequest funds	287,301	380,399
Acquisition of collection items	(1,045,193)	(609,637)
Acquisition of property, plant and equipment	-	(44,062)
Endowment fund operational expenditure	(52,946)	(69,553)
Net movements	(569,391)	(105,877)
<b>Ending balance</b>	<b>5,023,477</b>	<b>5,592,868</b>

	<b>2010</b>	<b>2009</b>
	<b>\$</b>	<b>\$</b>
<b>Represented by:</b>		
Acquisition Fund	336,822	554,998
Cranleigh Barton Fund	24,367	23,112
Director's Mason Fund	65,050	61,700
Estate D A Harrison Fund	3,855	3,657
Estate D A Russell Fund	976,286	1,413,128
Estate G M Flemming Fund	23,420	22,213
Estate M C Richards Fund	614,580	587,160
Estate M M Adamson Fund	56,676	53,757
Estate M N Duff Fund	25,078	23,786
Estate R J Reynolds Fund	1,234,635	1,248,712
Estate W D Barnett Fund	36,310	34,440
H F Von Haast Fund	72,705	68,961
Linblad Antarctic Fund	7,415	7,034
Museum Endowment Fund	1,493,910	1,440,542
P J Skellerup Antarctic Fund	5,341	5,066
Popular Publications Fund	38,423	36,444
Stamp Room Fund	8,604	8,161
	<b>5,023,477</b>	<b>5,592,868</b>

Trust and bequest funds can only be used in accordance with benefactors' directions. Where directed, the bequest is held in perpetuity and only the income earned is available for use. The amounts of trusts and bequests received and the related interest and other gains earned on the investments are recorded as revenues and are transferred from Retained Earnings to Trust and Bequest Fund reserve.

The Museum Endowment Fund includes the Museum's portion of capital funds resulting from the sale of the assets of the former Museum, Library and School of Technical Science Endowment, referred to in s21 of the Canterbury Museum Trust Board Act 1993.

**d Available-for-sale revaluation reserve**

Beginning balance	90,815	939,413
Change in value of available-for-sale financial assets	35,893	47,167
Sale of available-for-sale financial assets	(25,723)	(895,765)
<b>Ending balance</b>	<b>100,985</b>	<b>90,815</b>

The available-for-sale revaluation reserve arises on the revaluation of available-for-sale financial assets; gains and losses are recognised directly in equity. Where a revalued financial asset is impaired, that portion of the reserve which relates to that financial asset is recognised in profit or loss. Where a revalued financial asset is sold, that portion of the reserve which relates to that financial asset, and is effectively realised, is recognised in profit or loss.

# Notes to the Financial Statements

	2010 \$	2009 \$
<b>e Term loan repayment reserve</b>		
Beginning balance	1,068,106	905,585
Transferred from retained earnings	171,054	162,521
<b>Ending balance</b>	<b>1,239,160</b>	<b>1,068,106</b>
Term loan repayment reserve is intended for the repayment of term loans as they become due.		
<b>13 RETAINED EARNINGS</b>		
Beginning balance	4,603,535	5,822,324
Net profit/(loss) during the year	(651,859)	(332,734)
Transfer to asset replacement reserve	(1,095,072)	(829,410)
Transfer to trust and bequest funds	569,391	105,877
Transfer to term loan repayment reserve	(171,054)	(162,521)
<b>Ending balance</b>	<b>3,254,941</b>	<b>4,603,535</b>
<b>14 RECONCILIATION OF CASH FLOW FROM OPERATING ACTIVITIES</b>		
Net profit/(loss) during the year	(651,859)	(332,734)
<b>Add/(Less) non-cash and non-operating items:</b>		
Depreciation and amortisation	1,452,633	1,485,733
Realised (gain)/loss on sale of financial instruments	(41,108)	(137,346)
Unrealised gain/(loss) on sale of financial instruments	6,403	548,730
<b>Add/(Less) changes in working capital:</b>		
Debtors and other receivables	(174,665)	361,144
Creditors and other payables	102,499	(75,686)
Employee entitlements	11,253	39,324
Grants received in advance	163,240	239,303
<b>Net cash flow from operating activities</b>	<b>868,396</b>	<b>2,128,467</b>
<b>15 RECONCILIATION OF ACTUAL NET PROFIT/(LOSS) TO BUDGETED NET PROFIT/(LOSS)</b>		
Reported net profit/(loss) during the financial year	(651,859)	(332,734)
<b>Add/(Less)</b>		
Unbudgeted donations and bequests received	(46,883)	(88,092)
Unbudgeted grants received	(94,498)	(35,066)
Revenue over budget	(48,124)	(311,798)
Other income over budget	(40,625)	(558,320)
Finance cost under budget	(3,605)	(52,905)
Employee benefits expense over/(under) budget	74,753	123,449
Other expenses over/(under) budget	490,522	393,925
Depreciation over budget	117,633	116,733
Unrealised loss on financial instruments not budgeted	6,403	548,730
<b>Budgeted net profit/(loss) for the year</b>	<b>(196,283)</b>	<b>(196,078)</b>

## 16 EXPLANATION OF MAJOR VARIANCES AGAINST BUDGET

Explanations for major variations over \$50,000 from the Museum's budget figures are as follows:

### Grants revenue

Grants revenue exceeded budget by \$94,498 as a result of increased funding for contracted curatorial services.

### Employee benefits expense

Employee benefits expense exceeded budget by \$74,753 due to increased fixed-term staff to assist with the additional contracted curatorial services.

### Other expenses

Other expenses exceeded budget by \$490,522 due to increased bequest-funded collection acquisitions which were funded entirely by bequests recognised in previous years financial statements.

### Depreciation

Depreciation exceeded budget by \$117,633 due to the reclassification of property, plant and equipment in previous years financial statements.

## 17 OPERATING COMMITMENTS

An operating commitment has been made for \$1m over the next two years for a bequest-funded collection acquisition.

## 18 CAPITAL COMMITMENTS

There were no capital commitments at 30 June 2010 (2009: \$nil).

## 19 CONTINGENT LIABILITIES

There were no contingent liabilities at 30 June 2010 (2009: \$nil).

	2010 \$	2009 \$
<b>20 KEY MANAGEMENT PERSONNEL</b>		
Short-term employee benefits	565,658	543,981
	<b>565,658</b>	<b>543,981</b>

## 21 KEY SOURCES OF ESTIMATION UNCERTAINTY

The effect of estimation on these financial statements is greatest in assessing any impairment in debtors and property, plant and equipment. The Museum has assessed that there are no doubtful debts and no impairment of property, plant and equipment as at balance date (2009: \$nil).

## 22 FINANCIAL RISK MANAGEMENT POLICIES

The main financial risks inherent in the Museum's operations include credit risk, liquidity risk and interest rate risks. The Museum's overall financial risk management policies focus on the unpredictability of funding sources and seek to minimise potential adverse effects on the Museum's financial performance. Below are descriptions of the Museum's financial risk management policies.

### a Credit risk

Credit risk represents the risk that one party to a financial instrument will cause a financial loss for the other party by failing to discharge an obligation.

The Museum does not require any collateral or security to support these financial arrangements.

The maximum credit risk is the carrying value of the financial assets detailed below as at 30 June 2010, however, the Museum considers the risk of non-recovery of these amounts to be low as at that date.

# Notes to the Financial Statements

	2010 \$	2009 \$
Cash and cash equivalents	2,048,973	1,577,288
Debtors (Note 4)	51,967	81,156
Accrued interest receivable (Note 4)	181,840	134,828
Bank term deposits (Note 5)	9,042,837	9,162,711
Fixed-term investments (Note 5)	7,865,575	8,038,031
Investments in equity securities (Note 5)	2,488,214	2,117,714
	<b>21,679,406</b>	<b>21,111,728</b>

The above maximum exposures are net of any recognised impairment losses on these financial instruments. There are no significant debtors that are past their due date or considered impaired.

## Concentrations of credit risk

The Museum places its cash and cash equivalents and term deposits with large and reputable banks or financial institutions which have been credited an "A" rating or higher by Standard and Poor's.

The Museum has no other significant concentrations of credit risk arising from debtors.

Fixed term investments and investments in equity securities are managed by a third party share broking, investment advisory and portfolio management firm.

## b Liquidity risk

Liquidity risk represents the Museum's ability to meet their financial obligations as they fall due. The Museum manages liquidity risk by maintaining adequate bank balances and continuously monitoring cash flow forecasts.

	Carrying amount \$	Contractual cash flows \$	Less than 1 year \$	1 - 5 years \$	More than 5 years \$
<b>Contractual maturity analysis of financial liabilities</b>					
Creditors and other payables	461,514	461,514	461,514	-	-
Term loans	2,550,000	3,635,535	166,395	665,580	2,803,560
<b>Total</b>	<b>3,011,514</b>	<b>4,097,049</b>	<b>627,909</b>	<b>665,580</b>	<b>2,803,560</b>

## c Interest rate risk

Interest rate risk represents the risk that the fair value of future cash flows of a financial instrument will fluctuate because of changes in market interest rates. The Museum is exposed to interest rate risk in respect to its cash and cash equivalents, term deposits, fixed term investments and term loans. The Museum manages interest rate risk by monitoring the level of borrowings and deposits secured using fixed rate instruments. The Museum notes that since balance date the financial markets have been subject to volatility.

2010

2009

The following financial arrangements have interest rates ranging between:

Cash and cash equivalents	Fixed and floating rates	0.25%-4.90%	0.25%-4.30%
Bank term deposits	Fixed rates	4.80%-4.93%	2.75%-4.50%
Fixed term investments	Fixed rates	4.12%-10.43%	6.42%-10.43%
Grants received in advance	Fixed rates	4.60%-4.93%	4.25%-4.25%
Term loans	Fixed rates	6.49%-6.55%	6.49%-6.55%

Bank term deposits are invested on fixed terms at fixed interest rates for a maximum of six months.

#### d Foreign currency risk

The Museum has exposure to foreign exchange risk as a result of transactions denominated in foreign currencies arising from investing activities. Foreign exchange risks are not hedged by the Museum as the balances are minimal.

	Carrying value (Local)	Year end FX rate	Carrying value (NZD)	FX rate	Impact on equity	FX rate	Impact on equity
<b>2010</b>							
Australian listed equities	358,378	0.81	439,944	0.86	(25,442)	0.76	28,770
US listed equities	1,253,459	0.69	1,829,173	0.74	(124,390)	0.64	143,970
	<b>1,611,837</b>		<b>2,269,117</b>		<b>(149,832)</b>		<b>172,740</b>
<b>2009</b>							
Australian listed equities	340,069	0.80	424,503	0.85	(24,938)	0.75	28,259
US listed equities	979,226	0.65	1,516,534	0.70	(108,993)	0.60	127,290
	<b>1,319,295</b>		<b>1,941,037</b>		<b>(133,932)</b>		<b>155,549</b>

**e Market risk**

Market risk is the risk that the fair value of future cash flows of equity financial instruments will fluctuate because of changes in market prices (ie sharemarket).

			Sensitivity analysis			
	Carrying value (NZD)	Unrealised gain/loss	10% market price increase	Impact on equity	10% market price decrease	Impact on equity
<b>2010</b>						
Equity investments	2,488,241	42,296	2,737,035	248,821	2,239,393	(248,821)
<b>2009</b>						
Equity investments	2,117,714	(501,563)	2,329,485	211,771	1,905,943	(211,771)

**23 POST-REPORTING DATE EVENTS**

No adjusting or significant non-adjusting events have occurred between the reporting date and the date of authorisation.

**24 RELATED PARTIES**

There were no related party transactions during the year other than those noted in Note 11.

The Museum is funded from the contributing authorities, being Christchurch City Council, Hurunui District Council, Selwyn District Council and Waimakariri District Council.

**25 CAPITAL MANAGEMENT**

The Museum's capital is its equity, which comprises retained earnings and other reserves.

The Museum is subject to the financial management and accountability provisions of the Canterbury Museum Trust Board Act 1993.

The Museum manages its equity as a by-product of prudently managing income, expenditure, assets and liabilities to ensure it effectively achieves its objectives and purpose, whilst remaining a going concern.

**26 AUTHORISATION OF FINANCIAL STATEMENTS**

The financial statements for the year ended 30 June 2010 (including comparatives) were approved by the Museum Board on 8 November 2010.

# Statement of Service Performance

## CANTERBURY MUSEUM TRUST BOARD STATEMENT OF SERVICE PERFORMANCE

For the year ended 30 June 2010

	Objectives	Targets	Outcomes
<b>Our visitors</b>	- Achieve visitor numbers	575,000	638,216
	- Achieve door donations	\$152,500	\$158,491
	- Achieve % of visitors rating their Museum experience as good, very good or excellent	Over 95%	97%
	- Ensure paid staff have completed relevant customer service training	95%	Achieved
	- Maintain a healthy, safe and secure facility	Monthly IQP reports to comply with the Building Act 2004	Achieved
	- Provide person-to-person access to collections expertise in response to 100% of requests (total number to be reported)	100% (Total number)	100% (3,255)
<b>Our programmes</b>	- Develop, deliver and evaluate 16 special exhibitions, including two large special exhibition in the Robert McDougall Gallery	16	19
	- Tour an exhibit to the three contributing district council areas	3	3
	- Achieve the number of individuals receiving a learning experience from a public programme	20,000	30,832
	- Achieve 35,000 individuals in organised groups using the Museum as an education resource (including 30,000 school students)	35,000 (30,000)	37,366 (23,453)*
	- Achieve paid admissions to Discovery	55,000	48,358
	- Answer 100% of external written/phone/email enquiries within 5 days (total number to be reported)	100% (Total number)	100% (18,711)
	- Achieve 450 media hits	450	502
	- Actively participate in professional associations/external bodies	35	40
	- Provide outreach to other Canterbury museums and related organisations	Hours (No of organisations)	614 (138)
<b>Our collections</b>	- 100% of objects acquired entered onto the Vernon database and verified to a maximum of 5,000	100%	99% (3,306 of 3,347)
	- Skeletal records for 80,000 objects added to the Vernon database and verified	80,000	121,437
	- Process 100% of all approved loan requests (total number of objects loaned)	100%	100% (388)
	- Complete a Collections Inventory (last revised April 2000)	June 2010	Achieved
<b>Our research</b>	- Publish externally peer-reviewed papers	15	17
	- Peer review external articles or supervise theses	20	30
	- Publish one volume of <i>Records of the Canterbury Museum</i>	1	1
	- Present conference papers	10	14
	- Adjunct positions held in research institutions	4	4
	- Continue six-monthly Visitor Monitor market research programme	July 2009 and February 2010	Achieved
<b>Our people and working environment</b>	- Pursue strategy for Museum's future housing needs targeting commencement of works in July 2011	June 2010 and ongoing	Ongoing
	- Maximise return on investment funds within the Museum's Investment Policy	>5.0%	5.4%
	- Achieve audit with only qualification being agreed departure from NZ IAS 16 as regards valuation and capitalisation of heritage assets	November 2009	Achieved
	- Achieve an end-of-year financial result within budget	June 2010	Achieved
	- Achieve structured training and development hours for staff including volunteers	2,500	3,002
	- Achieve volunteer hours	10,000	10,743
	- Retain accreditation as an Investor in People	June 2010	Achieved
	- Complete self assessment against Museum Standards Scheme	June 2010	Achieved

\* Note - in previous years adults accompanying students have incorrectly been included. In 2010 this number was 4,295.

# Audit Report



## Grant Thornton New Zealand Audit Partnership

Level 9, Grant Thornton House  
47 Cathedral Square  
PO Box 2099  
Christchurch 8140

**T** + 64 3 379 9580  
**F** + 64 3 366 3720

[www.grantthornton.co.nz](http://www.grantthornton.co.nz)

### The readers of Canterbury Museum Trust Board's financial statements and statement of service performance for the year ended 30 June 2010.

The Auditor-General is the auditor of Canterbury Museum Trust Board (the Museum). The Auditor-General has appointed me, Brent Kennerley, using the staff and resources of Grant Thornton, to carry out the audit of the financial statements and statement of service performance of the Museum, on her behalf, for the year ended 30 June 2010.

### Qualified opinion – non-recognition of Museum collection assets

As stated in Note 1(D) (viii) pages 24 and 25, the Board has not recognised the museum collection assets owned by the Museum in the Statement of Financial Position nor the associated depreciation expense in the Statement of Comprehensive Income. This is a departure from applicable New Zealand Equivalent to International Accounting Standard 16 (NZ IAS 16): Property, Plant and Equipment, which requires all assets to be recognised and depreciated in the financial statements. There are no practical audit procedures that we have been able to apply to quantify the effect of this departure from NZ IAS 16.

In our opinion because of the effect of the non-recognition of museum collection assets, the financial statements of the Museum on pages 19 to 39:

- do not comply with generally accepted accounting practice in New Zealand; and
- do not give fairly reflect:
  - the Museum's financial position as at 30 June 2010; and
  - the results of its operations for the year ended on that date.

In our opinion the financial statements on pages 19 to 39:

- fairly reflect the cash flows for the year ended 30 June 2010; and
- the statement of service performance measured against the performance targets adopted for year ended 30 June 2010.

If it were not for the failure to account for the museum collection assets in the manner required by NZ IAS 16 as outlined above, then, in our opinion, the financial statements of the Museum would fairly reflect the financial position as at 30 June 2010 and the results of its operations for the year ended on that date.

The audit was completed on 8 November 2010, and is the date at which our opinion is expressed.

The basis of our opinion is explained below. In addition, we outline the responsibilities of the Board and the Auditor, and explain our independence.

### Basis of Opinion

We carried out the audit in accordance with the Auditor-General's Auditing Standards, which incorporate the New Zealand Auditing Standards.

We planned and performed the audit to obtain all the information and explanations we considered necessary in order to obtain reasonable assurance that the financial statements and statement of service performance did not have material misstatements, whether caused by fraud or error.

Material misstatements are differences or omissions of amounts and disclosures that would affect a reader's overall understanding of the financial statements and statement of service performance. We found material misstatements that were not corrected as we referred to in our opinion.

The audit involved performing procedures to test the information presented in the financial statements and statement of service performance. We assessed the results of those procedures in forming our opinion.

Audit procedures generally include:

- determining whether significant financial and management controls are working and can be relied on to produce complete and accurate data;

### Chartered Accountants

Member of Grant Thornton International Ltd.

- verifying samples of transactions and account balances;
- performing analyses to identify anomalies in the reported data;
- reviewing significant estimates and judgements made by the Board;
- confirming year-end balances;
- determining whether accounting policies are appropriate and consistently applied; and
- determining whether all financial statement and performance information disclosures are adequate.

We evaluated the overall adequacy of the presentation of information in the financial statements and statement of service performance. We did not obtain all the information and explanations we required because of the non recognition of museum collection assets.

#### **Responsibilities of the Board and the Auditor**

The Board is responsible for preparing financial statements in accordance with generally accepted accounting practice in New Zealand. Those financial statements must fairly reflect the financial position of the Museum as at 30 June 2010. They must fairly reflect the results of its operations and cash flows for the year ended on that date. The Board is also responsible for preparing statement of service performance that fairly reflects the service performance achievements for the year ended 30 June 2010. The Board's responsibilities arise from the Canterbury Museum Trust Board Act 1993.

We are responsible for expressing an independent opinion on the financial statements and statement of service performance and reporting that opinion to you. This responsibility arises from section 15 of the Public Audit Act 2001 and section 27 of the Canterbury Museum Trust Board Act 1993.

#### **Independence**

When carrying out the audit we followed the independence requirements of the Auditor-General, which incorporate the independence requirements of the New Zealand Institute of Chartered Accountants.

Other than the audit, we have no relationship with or interests in the Museum.



#### **Brent Kennerley**

Grant Thornton New Zealand Audit Partnership

On behalf of the Auditor-General  
Christchurch, New Zealand

#### **Chartered Accountants**

Member of Grant Thornton International Ltd.

# Exhibitions

**Assume Nothing: Transgender  
portrait photography**

4 July – 6 September 2009

**Snare/Mahanga: Contemporary  
artists respond to birds in the Canterbury  
Museum Collection**

22 July – 13 September 2009

**Threadworks 09**

24 July – 2 August 2009

**Chamber of Commerce:  
150th anniversary**

8 August – 1 November 2009

**Air New Zealand Environment  
Trust Weta**

10 September - 29 November 2009

**Ey! Iran**

9 October – 29 November 2009

**Canterbury Potters**

5 -15 November 2009

**Images of the New Millennium**

28 November 2009 – 21 February 2010

**Maumahara / Remember: Cloaks by  
Rokahurhia Ngarimu-Cameron**

21 November 2009 – 21 March 2010

**Pleasure and Play in Edo Japan**

5 December 2009 – 7 March 2010

**Anthony Wilding**

12 December 2009 – 31 May 2010

**Hurunui Quilts**

9 January – 26 April 2010

**Vertical Garden: Festival  
of Flowers**

19 February – 14 March 2010

**Mō Tātou a Mo Ka Uri**

20 February – 20 June 2010

**Wairua: Te Tai Tamariki Trust:  
Children's Book Illustrations**

13 March – 20 June 2010

**Canterbury Fired Up**

17 – 28 March 2010

**St John: 125 Years**

1 April 2010 – ongoing

**Carved Birds of the Chatham Islands**

8 May 2010 – ongoing

**Once upon a Time**

1 June 2010 – ongoing

# Museum Representation on External Organisations

Antarctic Heritage Trust, Deputy Chairman;  
Executive Committee, Chair

**Anthony Wright**

Art & Industry Biennial Trust, Deputy Chairman

**Anthony Wright**

Bush Telly Trust Board Member

**Simon Pollard**

Canterbury History Teachers' Association

**Marion Coxon**

Canterbury Disaster Salvage Team

**Lou Duncan**

Canterbury Science Teachers' Association

**Louisa Preen**

Canterbury Social Studies Teachers' Association

**Anthony Hennig**

Christchurch City Council Public Art Advisory  
Group, Chair

**Anthony Wright**

Clark Collection/Creative NZ Scholarship, Selection Panel

**Anthony Wright**

Council of Australasian Museum Directors

**Anthony Wright**

Cranleigh Barton Estate, Advisory Trustee

**Anthony Wright**

Cultural Precinct, Management Group

**Anthony Wright**

Cultural Precinct, Marketing Committee

**Karin Stahel**

Department of Conservation, Chatham Island Seabird  
Species Recovery Team

**Paul Scofield**

Canterbury Museum Friends, Committee Member

**Anthony Wright**

Canterbury Museum Friends, Treasurer

**Nigel Tecofsky**

Government House Auckland, Gardens Committee Member

**Anthony Wright**

Koiata Botanical Trust, Trustee

**Anthony Wright**

Mason Foundation, Accountant

**Nigel Tecofsky**

Mason Foundation, Trustee

**Anthony Wright**

New Zealand Botanical Society, President

**Anthony Wright**

Museums Aotearoa, Chair

**Lesley Colsell**

Museums Australia Photography Special  
Interest Group

**Jane Macknight**

Museums Education Association of New Zealand

**Louisa Preen**

Network of Australasian Museum Exhibitors (NAME)

**Stephen Ruscoe**

New Zealand Antarctic Society: *Antarctic*, Editor

**Natalie Cadenhead**

New Zealand Institute of Chartered Accountants –  
Not-for-Profit Special Interest Group, Convenor

**Nigel Tecofsky**

Ornithological Society of New Zealand,  
Checklist Committee

**Paul Scofield**

Ornithological Society of New Zealand,  
Scientific Committee

**Paul Scofield**

Robin S Allan Memorial Fund, Trustee

**Anthony Wright**

Robin S Allan Memorial Fund, Treasurer

**Nigel Tecofsky**

Royal Society of New Zealand, Canterbury Branch  
Council Member

**Simon Pollard**

Te Papa National Services Te Paerangi Advisory Group

**Anthony Wright**

Touring Exhibitions Network New Zealand (TENNZ)

**Stephen Ruscoe**

University of Canterbury, Macmillan Brown Centre for  
Pacific Studies, Adjunct Associate Professor

**Roger Fyfe**

University of Canterbury, Department of Geological  
Sciences, Senior Fellow

**Norton Hiller**

University of Canterbury, School of Biological Sciences,  
Post Graduate Student Committee

**Simon Pollard**

University of Canterbury, School of Biological Sciences,  
Adjunct Professor

**Simon Pollard**

University of Canterbury, School of Biological Sciences,  
Senior Fellow

**Paul Scofield**

# Museum Staff

## Establishment staff

**Hamish Anderson** – Exhibitions Technician (from 2 Nov 2009)

**Rick Bishop** – Protective Services Officer

**Leanne Brough** – Education Receptionist

**Natalie Cadenhead MLIS, GCAS, BA (Hons), Cert Small Business, NZCCD, PGCP, BA** – Curator of Antarctic and Canterbury Social History

**Damian Cairns BA** – Curator of Pictorial Collections (from 14 Jun 2010)

**Jerry Champion** – Curatorial Manager

**Bruce Chant** – Protective Services Officer

**Lesley Colsell MBA, Museums Dip, BA (Hons)** – General Manager Museum Programmes

**Joanna Condon MLIS, BA** – Information Manager/Curator of Manuscripts

**Marion Coxon Higher Dip Tchng** – Education Communicator

**Karen Crocker** – Visitor Host

**Michael Davies MA** – Collections Technician

**Sebastian Denize Cert Eng** – Exhibitions Preparator

**Lou Duncan** – Collections Manager – Objects

**Terri Elder BA (Hons) M.Phil, PG, Dip Tchng** – Collection Services Manager (from 22 Mar 2010)

**Terry Fagan Dip ICT, Cert SA, CCNA** – Computer Support Technician

**Amy Findlater BA (Hons)** – Associate Curator of Anthropology (from 6 Apr 2010)

**Derene Flood** – General Manager Corporate Services

**Rachael Fone BA** – Collections Technician

**Roger Fyfe MA (Dis), BA (Hons)** – Senior Curator of Anthropology

**Jennifer Gallagher** – Visitor Host (to 29 Jul 2009)

**Paul Harding-Browne** – Collection Services Manager (to 6 Oct 2009)

**Patricia Heaton** – Protective Services Officer

**Anthony Hennig BTchLn** – Education Communicator

**Bernadette Hewson-Martini** – Visitor Host

**Norton Hiller PhD, BSc (Hons)** – Curator of Geology

**Rosemary Hoare** – Receptionist

**Helen Hoy Dip Tchng** – Education Receptionist

**Evelien Huismans MA, BA** – Volunteer/Training Co-ordinator

**Kevin Jago** – Building Supervisor

**Bernard Johns** – Cleaner

**Sarah Keast** – Visitor Host

**Michelle Lambert Dip Sci** – Documentary Research Centre Communicator (commenced 12 months Leave without Pay from 21 Jun 2010)

**Anthony Layton** – Visitor Host

**Janette Leyland BSc** – Collections Technician (Parental Leave from 12 Jun 2010)

**Jane Macknight BCom, LLB (Hons), BDes** – Curator of Pictorial Collections (to 18 Dec 2009)

**Kerry McCarthy MA (Hons), BA (Hons)** – Curator of Pictorial Collections

**Kate McCaughan** – Collections Manager – Documentation

**Guy McKinnon BA** – Visitor Host

**Shannon Mills** – Education Receptionist

**Dominic Murray BA** – Visitor Host

**Maxine Muscroft** – Director's Personal Assistant

**Jane Myhill BA (Hons), GradDipJ** – Documentary Research Centre Communicator

**Kelvin Nolly** – Protective Services Manager

**Chris O'Rourke** – Exhibitions Preparator

**Hamish Palmer BFA, MFA (Hons)** – Exhibitions Technician

**Denise Patterson** – Visitor Host

**Simon Pollard PhD, MSc, Dip Tchng** – Curator of Invertebrate Zoology

**Louisa Preen BEdSc, Dip Tchng** – Education Communicator

**Jennifer Quérée BA** – Senior Curator of Decorative Arts

**Stephen Ruscoe Cert Crft Des** – Exhibitions Manager

**Jayne Schaapveld** – Accounts Administrator

**Paul Scofield PhD, MSc (Hons), BSc** – Curator of Vertebrate Zoology

**Emma Scott BA** – Visitor Host (from 29 Oct 2008)

**Karin Stahel BMS (Hons)** – Communications Manager

**Alan Stedman** – Protective Services Officer (from 28 Oct 2008)

**Dayna Stiles BA Des** – Graphic Design Technician (from 19 Jan 2009)

**Sasha Stollman BA, Cert Cons** – Conservator

**Allan Sutherland Dip 3D Design** – Exhibitions Preparator

**Nigel Tecofsky BCom, CA** – Financial Controller

**Nicholas Tolan BSc (Hons)** – Customer Services Manager

**Rachel Vavasour PG Dip Mus Studies, BA, Dip Tchng** – Education & Public Programmes Manager (commenced Parental Leave 6 Apr 2010)

**Sarah Whitehead MA (Dis), BA (Hons)** – Curator of Canterbury Social History

**Aaron Wilkinson** – Collections Technician (from 20 Jul 2009)

**Katie Wilson B Des** – Collections Technician - Images

**Anthony Wright MSc, FNZIM** – Director

## Casual and short-term contract staff

**Raymond Arthurs** – Protective Services Officer, Casual (from 28 Jan 2010)

**Tiana Bielski** – Collections Technician – Pictorial

**Nicolas Boigelot** – Collections Technician (from 26 Aug 2009)  
**Michael Bolger** – Protective Services Officer, Casual (from 13 Oct 2009)  
**Sreymony Bowron-Muth MA, BA (Hons) Dip Grad** – Collections Assistant Vertebrate Zoology (to 30 Jun 2010)  
**Emma Brooks** – Research Associate in Archaeology (from 12 Oct 2010)  
**Stephen Collins** – Protective Services Officer, Casual  
**Melanie Cordes** – Visitor Host, Casual  
**Jennifer Gallagher** – Visitor Host, Casual (from 1 Aug 2009)  
**April Guenther BFA** – Collections Technician  
**Diane Irving** – Visitor Host, Casual  
**Virginia Malcolmson** – Visitor Host, Casual  
**Sarah McKay** – Collections Technician (to 26 Feb 2010), Collections Technician (from 1 Mar 2010 to 29 Jun 2010)  
**Bridget Mosely BA, MA, MSc** – Research Associate in Archaeology (from 5 Jan 2010)  
**Baden Norris QSO** – Antarctic Tour Guide, Casual  
**Peter Pexton** – Visitor Host, Casual  
**Tuhi Rangi** – Protective Services Officer, Casual (from 19 Feb 2010)  
**Emma Scott BA** – Visitor Host (from 4 Dec 2009)  
**Jessica Stewart** – Collections Technician (to 30 Oct 2009)  
**Jessica Todd** – Visitor Host (from 17 Feb to 20 Jun 2010), Visitor Host, Casual (from 24 Jun 2010)  
**Hayley Ward** – Visitor Host (to 28 Oct 2008) Visitor Host, Casual (from 29 Oct 2008)  
**William Yip** – Education and Public Programmes Manager (from 12 Apr 2010)

### **Museum Volunteers**

#### **Emeritus Curator of Canterbury Museum History**

**Sally Burrage QSM, TTC**

#### **Emeritus Curator of Antarctic History**

**Baden Norris QSO**

### **Research Fellows**

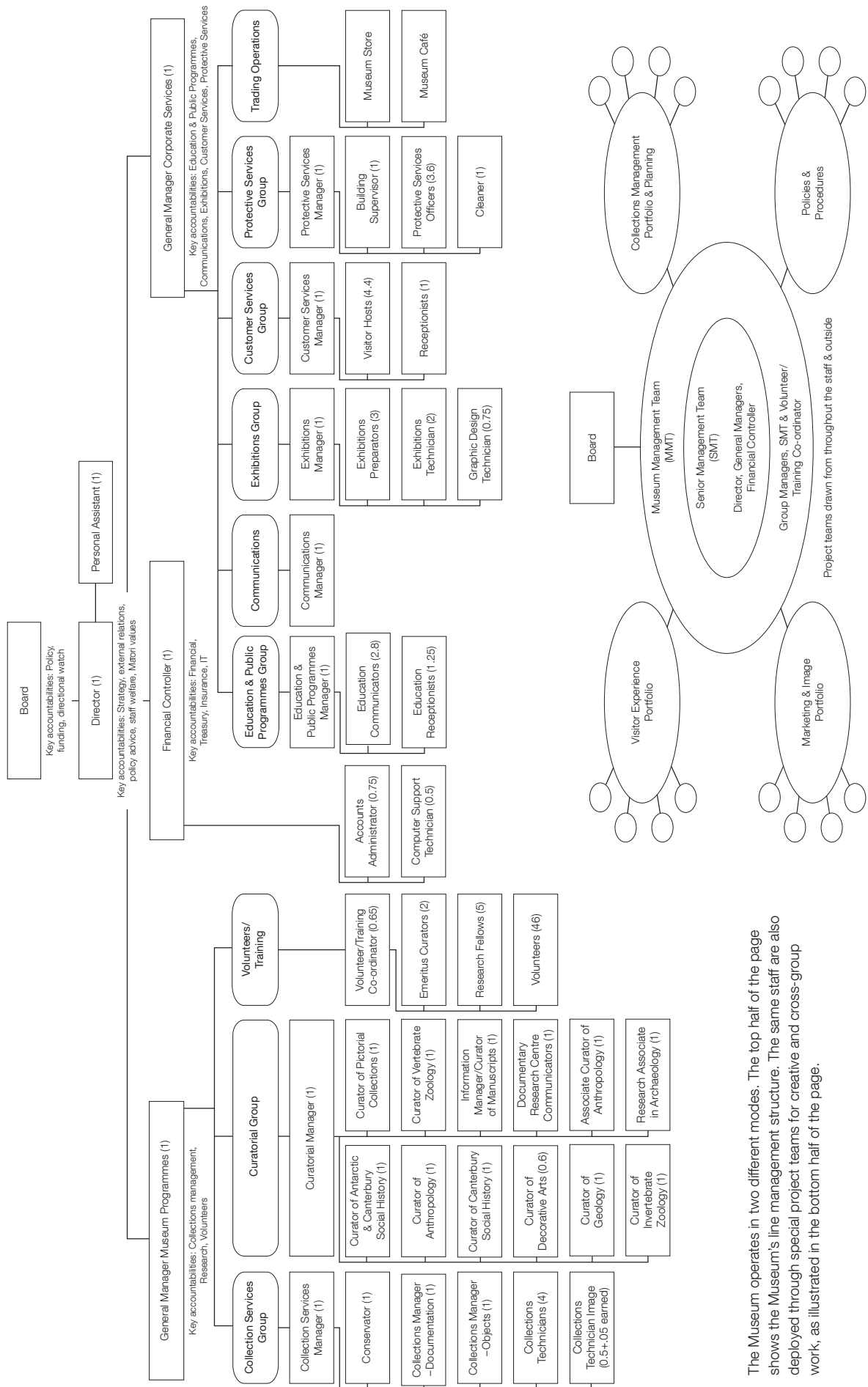
**Terry Hitchings MSc, Dip Tchg, FNZIC** – Invertebrate Zoology  
**Peter Johns MSc** – Invertebrate Zoology  
**David MacKinnon BSc, PhD** - Geology  
**Pat Quinn MSc** – Invertebrate Zoology  
**Yann-Pierre Montelle BSc, MA, PhD** - Anthropology

### **Volunteers**

**Allan Bilbrough** - Canterbury History/Manuscripts  
**Sally Bowring TTC** – Pictorial/Education & Public Programmes  
**Judi Brizzell** – Education & Public Programmes  
**Lionel Brook** – Pictorial

**Cara Chimirri** – Education & Public Programmes  
**Janet Chisnall** – Education & Public Programmes  
**John Clark MSc** – Invertebrate Zoology  
**Campbell Craig** - Education & Public Programmes  
**Royden Craig** - Education & Public Programmes  
**Ian Daniel** – Geology (to January 2009)  
**Graham Dunbar** – Pictorial  
**Don Eade** – Geology  
**Margaret Eade** – Pictorial  
**Berneice Edmonds RN, RMN** – Pictorial  
**Doreen Fraser PG Cert Op Th, RN, RMN** – Decorative Arts  
**Emily Green** – Invertebrate Zoology  
**Yvonne Hart** – Pictorial  
**Tim Hitchings MB ChB** – Invertebrate Zoology (from April 2009)  
**Karen Hodge** – Education & Public Programmes  
**Alison Hutton** – Canterbury History/Manuscripts  
**Ray Jackson** – Geology (to January 2009)  
**Lesley Jenner BHSc** – Invertebrate Zoology  
**Daniel Johnson** – Education & Public Programmes  
**Ruth Johnson** – Education & Public Programmes  
**Karol London** – Education & Public Programmes  
**Marion Macbeth** – Vertebrate Zoology  
**Virginia Malcolmson Dip Tchg** – Pictorial  
**Al Mannering** – Geology (to January 2009)  
**Michael Morris** – Pictorial  
**Jack Nesbit** – Education and Public Programmes  
**Masanori Nishiyama** – Invertebrate Zoology  
**Anne-Marie Oliver** – Education & Public Programmes  
**Pauline Pease Dip K, E of D** – Decorative Arts  
**Christine Robinson** – Education & Public Programmes  
**Philippa Savage BA** – Decorative Arts  
**Tayla Schaapveld** - Education and Public Programmes  
**Susan Smith BA, Dip Lib, Dip Photog** – Pictorial  
**Kiblas Soaladaob** - Anthropology (to December 2008)  
**Pamela Stylianou** – Canterbury History (to October 2008)  
**Joshua Sullivan** – Education & Public Programmes (to April 2008)  
**Paula Thompson TTC** - Canterbury History/Manuscripts (to December 2008)  
**David Visser** – Education & Public Programmes  
**Janet Walker MA, MSc** – Vertebrate Zoology  
**Jack Welsh** – Pictorial  
**Allan Williams** – Pictorial  
**Kathy Williams** – Pictorial/Education & Public Programmes

# Organisational Chart



The Museum operates in two different modes. The top half of the page shows the Museum's line management structure. The same staff are also deployed through special project teams for creative and cross-group work, as illustrated in the bottom half of the page.

# Benefactors

V H Allan  
Julia Anderson  
Antarctica New Zealand  
Margaret Austin  
P L M Bain  
Jean Bakkenes  
Ron Ball  
R J F Barnett  
Rae Bassett  
Virginia Bassett  
Janis Bell  
Derek Blackler  
Shirley D Blackmore  
Marlene Borgfeldt  
Mary Boyle  
Paul Clifton Bradley  
Ross Bradley  
S Brain  
Broadhead Family  
Len Brown  
Colin Brown  
Rowland Burdon  
Robin Burton  
Bobbi Campbell  
Canterbury Mountaineering Club  
Christchurch City Libraries  
Margaret Christophers  
Christ's College  
John Clark  
Robert Augustus Clements  
Deborah Collett  
Louise Deans  
Stephen James Douglas  
Graham Dunbar

Kevin Edward Erickson  
Friends of the Canterbury Museum  
Grant Gibson  
Helen Gleeson  
I M Henderson  
Kathy Hill  
Norton Hiller  
Alison Hutton  
Dorothy Irwin  
Barrie Robert Jackson  
Kevin Jago  
Diana E Johnston  
James M Lamont  
Janette Leyland  
Karol London  
Graham Mander  
A A Mannering  
D P Markham  
Brian Mason  
Bruce McClintock  
Michael McEvedy  
Ron McIntyre QSM  
Brent McLeod  
Simon Frazer Monks  
D Mossman  
Brian Murphy  
Jane Myhill  
Robert Nee  
New Zealand Post Collectables and Solutions Centre  
F C Nicholson  
NIWA  
Maurice Otley  
Juanita Joy Phillips

Norma Phillips  
Biddy Pollard  
Felicity Price  
Graeme Rasmusson  
Riccarton Bush Trust  
Salvation Army  
Jenny Scanlan  
Fay Scott  
Lois Searle  
Rebecca Sharpe  
Stephen Shimmin  
Ngairé Sparrow  
Tim Stedman  
Glenn Stein  
Moya Stewart  
Bryan Stickle  
Michelle Van Onselen  
Rachel Vavasour  
Mary Walker  
Mildred Walker  
John Webster  
Merv Woodham  
Trevor Worthy  
Anthony Wright  
Trisha Wright

# Canterbury Museum

## Canterbury Museum Trust Board

### Representing Christchurch City Council

Mayor Bob Parker  
Helen Broughton MA (Hons), Dip Ed (GC)  
Mike Wall  
Claudia Reid

### Representing Selwyn District Council

Michael McEvedy JP, QSO, Knight of Order of St John (Chairperson)

### Representing Hurunui and Waimakariri District Councils

Mayor Garry Jackson BA

### Representing University of Canterbury

Professor Kenneth Strongman BSc, PhD, FRSNZ, FBPS, FNZPS

### Representing Royal Society of New Zealand, Canterbury Branch

Dr Rod Syme PhD, BSc (Hons) (Deputy Chairperson)

### Representing Friends of Canterbury Museum

Annette Harris JP

### Representing Canterbury Pilgrims and Early Settlers' Association

John Thacker

### Representing Te Runanga o Ngāi Tahu

Charles Croft

## Ōhākī O Ngā Tipuna

Terry Ryan MBE, JP, HonDSc  
Anthony Wright MSc, FNZIM  
Norman Dewes  
Roger Fyfe MA (Dis), BA (Hons)  
Maurice Manawaroa Gray MNZM, JP LTh  
Michael Tuhorouta Kauī  
Michael McEvedy JP, QSO, Knight of Order of St John  
Mike Wall

## Canterbury Museum Friends Committee

Annette Harris JP - President  
Sandy Bain BA DipK - Vice President  
Nigel Tecofsky BCom CA - Treasurer  
Davina Didham BA - Minute Secretary  
Ailsa Dodge - Committee Member  
Alison Fox - Committee Member  
Ronice Henderson - Committee Member  
Heather Strong - Committee Member  
Colin Lewis MSc - Committee Member  
Bruce Renwick - Committee Member  
Anthony Wright MSc FNZIM - Committee Member (ex officio)

## Bequests

From its founding in 1867, bequests have played a crucial role in the remarkable growth and success of Canterbury Museum.

Financial and object bequests of all sizes maintain and strengthen the Museum's exceptional collections, exhibitions, publications, education and research programmes.

By supporting Canterbury Museum's general operations or a specific group or programme, you can have a real and positive impact on the work of the Museum and express your support of Canterbury's natural and human heritage.



## Form of Bequest

I give and bequeath to the institution known as the Canterbury Museum the sum of \$ ..... free of succession or estate duty to be applicable for the general purposes of such institution. And I declare that the receipt of the Director or the proper officer for the time being of such institution shall be a sufficient discharge for the same.





This paper was manufactured from ECF pulp produced from Farmed Trees in an ISO14001 and ISO9001 accredited mill, and was printed using soy based inks.

Published by the Canterbury Museum Trust Board  
Canterbury Museum, Rolleston Avenue, Christchurch 8013, New Zealand  
Phone 64 3 366 5000 Fax 64 3 366 5622  
[www.canterburymuseum.com](http://www.canterburymuseum.com)